

167th Listowel Agricultural Fair

July 13-16, 2023



AGRICULTURAL SOCIETY



Feeding the
World From
Our Own
Backyard

Advanced Prize List

www.listowelfair.com

@listowelfair

LISTOWEL AGRICULTURAL SOCIETY ADVANCED PRIZE LIST 2023

Thank you for picking up one of the advanced prize lists for the 167th Listowel Fair!

The fair dates are July 13 to 16, 2023

and our theme is

"Feeding the World From Our Own Back Yard"

You are welcome to pick up an entry form and tags at Pins & Needles in Listowel, at 177 Main St. W., open Tues. to Fri. 10am to 5pm or just give us a call and we will be happy to mail it to you. We use the same exhibitor numbers year after year, so if you remember your number you can use it. If you are new to exhibiting or cannot remember your exhibitor number, give us a call or email us (listowelfair@gmail.com) and we'll get you one! If you have any questions regarding the prize list, there is a committee chairperson listed at the top of each category. Please do not hesitate to contact these ladies. They will be happy to help you.

Exhibits will be accepted Tuesday July 11 (7pm to 9pm) or Wednesday July 12 (8am to 11am). Judging will take place Wednesday, July 12 from 12pm to 5pm. The Agricultural Hall will be closed for judging and will be open to the public starting at 10am on Thursday, July 13, 2023.

Homecraft exhibits are to be picked up from the Agricultural Hall from 4:30pm-5:30pm on Sunday, July 16 or on Monday, July 17 between 10:30am to noon.

Your prize money will be mailed to you in August.

The Homecraft Contacts for the Agricultural Society are:

Marybelle Dittmer, 519-291-1390; Elizabeth Johnston, 519-291-0644; listowelfair@gmail.com

Thank you for your interest and support of the Listowel Agricultural Society. We look forward to seeing you and your exhibits at **The Listowel Fair!**

**Entries can be submitted online ahead of time!
See the next page for details.**

Entry forms can be submitted online starting June 1st, 2023 with entries accepted at the dates/times below. Find the entry form at:

<https://www.assistexpo.ca/listowel-agricultural-society>

Paper copy entry forms will also be accepted.

Instructions for submitting an entry form online AND/OR for entering a virtual competition:

1. Visit: <https://www.assistexpo.ca/listowel-agricultural-society>
2. Log in to your account or, if you are new to entering online, create a new exhibitor profile with your name and contact information (if you have exhibited in the past, your profile will be matched up with the exhibitor number you have used in previous years)
3. Click on 'Add Entry' (found at the top of the page)
4. Click on the sections/classes you want to enter
5. If entering a virtual competition, upload your photo
6. A summary page will appear (and ask for membership payment if not already paid in 2022 for the 2023 year). If you aren't done entering yet, click on 'Add Entry' at the top of the page.
7. To finalize your entries, click submit - you will receive an email confirmation of your entries. You can still add more entries to your exhibitor profile after this.
8. Please bring your confirmation with you when dropping off your items.

NOTE: if you have more than one person in your household entering in the Listowel Fair, you can add them in under your profile by clicking on 'Add Exhibitor' at the top of the page.

2023 Listowel Fair

Baby Show



IN PERSON IN 2023!!

Saturday, July 15th, starting at 9:30am

**(please see class
times below)**

**Show
Information**

- No cost to enter
- Child's age is as of July 15, 2023
- Each entry will receive a title (e.g. baby with the biggest smile, curliest hair, biggest eyes)
- Each entry will receive a certificate and a ribbon
- By participating you are consenting to have your child's name, title and possibly picture in the local newspaper.



1. Girl 0-6 months old (9:30am)

2. Boy 0-6 months old (10am)

3. Girl 7-12 months old (10:30am)

4. Boy 7-12 months old (11am)

5. Multiple Births, 0-6 months old (10:25am)

6. Multiple Births, 7-12 months old (10:55am)



**The
Categories!**

2023 Listowel Fair – Advanced Prize List

Fine Arts

NOTE: All items exhibited in Fine Arts must be listed on a separate entry form and brought to the Fine Arts area upon drop off. Any items not listed or delivered prior to judging may be disqualified.

Committee Contact: Kathy Halliday (519-591-0568; kdhalliday33@gmail.com)

Preschool

1. Find and colour a picture of some fruit
2. Longest carrot grown in 2023
3. Make a candy necklace and display on a paper plate
4. Create a vegetable out of play-doh

Junior/Senior Kindergarten (** please indicate JK or SK on entry tag **)

5. Make a collage of your favourite foods on a paper plate
6. Print 'Backyard' on a 5"x7" piece of lined paper
7. Decorate a Styrofoam cup in any way to look like a person. Plant seeds in the cup that will grow to be the 'hair'. (The seeds should be sprouted and the growth of the plant visible.)
8. Necklace made from pasta and mounted on a 5"x7" piece of cardboard

Grade 1 & 2 (** please indicate grade 1 or grade 2 on entry tag **)

9. Draw and label a diagram of a vegetable garden
10. Largest green tomato grown in 2023
11. Print the theme of the fair 'Feeding The World From Our Own Backyard' on a lined sheet of 8 ½" x 11" paper
12. Make a tractor using a vegetable and other items of your choice

Grade 3 & 4

13. Sketch a picture of a crop grown in North Perth
14. Make a collage of farm vehicles on an 8 ½" x 11" piece of white paper
15. Write a 90-100 word story about your favourite food
16. Bouquet of flowers and weeds in a decorated tin can (not to exceed 12" in height)

Grade 5 & 6

17. Print a favourite recipe on a recipe card
18. Display 6 homemade oatmeal cookies on a paper plate (will be judged for taste and presentation)
19. Make a bird feeder using items of your choice
20. Pick some place in the world you would like to travel to and create a poster that would encourage others to travel there (max. 8 ½" x 11" white paper)

Grade 7 & 8

21. Print a world map on an 8 ½" x 11" piece of paper. Colour the map. Label ten countries and indicate a popular food item you might eat there
22. Draw a timeline that shows the process of a food going from 'Field to Fork'
23. Create a menu for a dinner using locally sourced food
24. Homemade brownies (6), ready to gift to a friend or neighbour. (Please include the recipe, handwritten.)

Amateur Artists

25. A pencil sketch of a harvesting scene
26. Colouring – Picture of choice – Theme: Food
27. A sunset scene - painted on canvas
28. Computer generated art using this years fair theme
29. Paint a nature scene on a flat rock, not to exceed 8"x10"

Handicrafts

30. A table centrepiece for Thanksgiving; base not to exceed 12" in length
31. An article of 'tye dye'
32. Small jar of caramel popcorn (will be opened and tasted; please include recipe)
33. Tin can lantern – Create a design on a tin can, using a hammer and nails to make holes. Must have a candle inside and a handle.
34. Garden art using old dishes or glassware
35. Something made out of old greeting cards
36. A plaid Christmas stocking
37. Handmade hot pads – set of 2
38. Knitted hat
39. Handmade article suitable for a hostess gift
40. A wooden cutting board with epoxy

Antiques – prior to 1960 (** please include a short story about your entry **)

40. A cookbook
41. A picture taken at a family dinner, mounted on black bristol board
42. An unusual kitchen utensil
43. A farm-related invoice
44. A postcard

Retro – 1960 – 1980 (** please include a short story about your entry **)

45. School Lunch Box
46. 8-Track Cassette
47. Magazine from the 1970's
48. Strawberry Shortcake Doll
49. Prom Picture; mounted on black bristol board
50. Sears Catalogue

Senior Citizens (Open to everyone over 60 years of age. Preference given to new work.)

51. Scrapbook page of a travel experience
52. Crocheted lap blanket
53. A gift box of snacks and activities for someone in a retirement or nursing home
54. Favourite photo of your grandchildren, mounted on black paper
55. Handmade birthday card
56. Handmade toy
57. Apron – sewn
58. An article of woodworking

PLANTS & CUT FLOWERS

Chairperson: Betty Bender, 291- 4603

Committee: Marlene McQuinn, Mary Kerr, Jan Chapman, Mary Foote, Pat Mayberry, Joyce Simpson, Carolyn Sturgeon, Paulette Coneybeare

Flowers in ALL classes must be HOME GROWN, established in suitable containers. Any exhibit not worthy will not be awarded a prize. At the discretion of the judge and the committee, a section may be subdivided.

Helpful Hints for Preparing Materials

(Ontario Judging Standards for Horticultural & Floral Design)

1. Cut flowers and foliage the evening before the show or in the early morning.
2. Flowers stay fresher and show better if there are NO LEAVES in the container.
3. Make a fresh slanting cut at the end of stems, for maximum water intake.
4. Place in a wide bucket in deep *warm water*, preferably overnight.
5. Store in a dark, humid, draft-free place.
6. Some cut flowers, foliage and woody materials do not readily absorb water and require further treatment to prevent wilting. Woody branches may benefit from splitting cut ends and some need the thick outer layer removed as well. Some cut flowers (e.g., poppies) benefit from burning the stem ends while others benefit by placing stem ends in boiling water or from chemicals in the water. About 2 Tbsp. of glycerine in 4 L of water, or florist crystals may be beneficial. Details are also available in flower arranging books.
7. Removal of dust, stains, and any other foreign material from blooms and foliage enhances the exhibit.
8. Remove damaged foliage.
9. Re-cut stem ends before placing in show containers.

POTTED PLANTS

Note: ONLY THE PLANT LISTED should be in the container.

Pots/containers are considered in overall appearance.

Accessories are acceptable.

Prizes : 1st \$5.00 2nd \$4.00 3rd \$3.00

1. Shamrock plant
2. African Violet, SINGLE CROWN, any colour
3. Any kind of fern (asparagus fern is not a true fern)
4. Fibrous Begonia, any number/colour of plants growing in a container
5. Philodendron, not over 20 in. high including pot
6. Tuberous begonia, in bloom, in pot
7. Baby tears, small leaves
8. Unlisted houseplant in bloom
9. One or more varieties of succulent plants (includes cactus) in one container, not over 20 in. high including pot
10. Any kind of ivy
11. Unlisted house plant UNDER 12" (NAMED)

12. Unlisted house plant OVER 12" (NAMED)
13. Any variety of orchid
14. Coleus plant collection growing in a container (1or more varieties)
15. Plant growing in a medium other than soil (e.g. air plant)

CUT FLOWERS

All cut flowers should be shown with own foliage.

Support in suitable container. Floral oasis should not be used. Glass beads, pin or glass frogs are allowed for support.

Aim for uniformity in height, flowers and leaves.

~ Bloom: An individual flower, one to a stem. A bud is considered a bloom.

~ Stem, Stalk or Scape: A plant structure carrying one or more flowers and/or buds.

~ It may be branched e.g. sweet peas, iris

~ Spray: A portion of a plant with a number of flowers e.g. chrysanthemum, petunia, floribunda roses etc.

Prizes: 1st \$5.00 2nd \$4.00 3rd \$3.00

16. Hosta, 3 leaves each a different variety, 4" or less in width
17. Hosta, 3 leaves each a different variety, more than 4" in width
18. Perennials (unlisted), 3 stems one variety, OVER 15" high, including container, NAMED
19. Perennials (unlisted), 3 stems one variety, UNDER 15" high, including container, NAMED
20. Annuals (unlisted), 3 stems one variety, OVER 15" high, including container, NAMED
21. Annuals (unlisted), 3 stems one variety, UNDER 15" high, including container, NAMED
22. One variety of white daisies, 5 stems
23. One variety of double white daisies, 5 stems
24. One variety of daisies other than white, 5 stems
25. Calla Lily, 1 stem with leaf from same plant
26. Daylily, 1 scape (stem), orange blends with own foliage
27. Daylily, 1 scape(stem) any colour other than orange blends with own foliage
28. Bee Balm, 5 stems, red or pink
29. Bee Balm, 5 stems mauve or purple
30. Marigolds, French(small), 3 blooms with own foliage
31. Petunias, single, 1 SPRAY with own foliage
32. Hydrangea, 1 stem, white
33. Hydrangea, 1 stem, coloured
34. Tuberous Begonia, one bloom floating in an open bowl, NO foliage (must float and not touch sides of bowl)
35. Sweet Peas, perennial, best display with own foliage
36. Pansies and/or viola with own foliage, best display
37. 1 flowering hosta stem with leaf from same plant
38. Rose, one bloom floating in an open bowl, NO foliage (must float and not touch sides of bowl)

39. Rose- Hybrid Tea, 1 stem in a vase with own foliage
40. One stem of a rose, any variety other than Hybrid Tea
41. Rose with best fragrance – 1 stem in a vase
42. Astilbe, 3 stems
43. Lilies, one stem, any shade of pink
44. Lilies, one stem, yellow or yellow blend
45. Lilies, one stem, white or white blend
46. Lilies, one stem, orange
47. Lilies, one stem, any colour not listed
48. Ornamental grass, 5 stems under 30” including vase
49. One clematis bloom floating in a suitable container, NO foliage, (must float and not touch sides of container)

DESIGNS WITH PLANT MATERIAL

A design is a combination of fresh and/or dried plant materials and/or inorganic objects arranged to produce an artistic unit.

(Floral oasis may be used)

Prizes: 1st \$10.00 2nd \$7.00 3rd \$5.00

50. “Local Food for a Worldly Palate”- Ontario fresh fruits and/or vegetables featured in an arrangement
51. “Forever Lasting” - design in a BASKET featuring dried and/or artificial fruits and/or vegetables which could be grown in Ontario – NO LIVE MATERIAL
52. “Local Fields and Trails” - design using wayside plant material
53. “People Put Flowers in the Craziest Things”
54. “Solitaire”- design using one bloom
55. “Fun with Foliage”- design using only foliage
56. “Celebrating Multiculturalism”- a multicolour design using at least 4 different colours
57. “Welcome to Canada”- design featuring red and white
58. “From Field to Fair” - design using local crops e.g. wheat, corn, beans
59. “Tiny Tim” - a miniature design not exceeding 5” any direction
60. “Goods On the Move” - arrangement in a toy truck
61. “Once Around Your Own Back Yard” - a bouquet in a vase

29 B – PATIO PLANTERS AND HANGERS

Plants must be growing in containers.

Prizes: 1st \$ 7.00 2nd \$5.00 3rd \$4.00

62. Flowering hanging planter – Minimum size container 10 in.
63. Foliage hanging planter (no flowers) – Minimum size container 10 in.
64. Patio Container with mixed plants
65. “Succulents” (hens & chickens, cacti etc.) growing in a novel container with accessories

- 66. Pot of 2 or more growing herbs
- 67. Fairy Garden
- 68. Plants in a wicker basket
- 69. Any container filled with one or more colours of ONLY impatiens

SPECIALS

FAIR THEME SPECIAL – A design interpreting the theme “Feeding the World From Our Own Back Yard”

- 1st - \$50 gift certificate from Fletcher’s Landscaping
- 2nd - \$25 gift certificate from Listowel Florist
- 3rd - \$25 gift certificate from Zehrs Food Plus, Listowel

MEMORIAL DESIGN – In memory of Marg Cleland, “Remembering in White”
Sponsored by Pauline and Richard Boertien

- 1st - \$10 2nd - \$8.00 3rd - \$7.00

MEMORIAL DESIGN – In memory of Doris Van Camp, “Blooms and Butterflies”
Sponsored by James and Margaret Van Camp

- 1st-\$10.00 2nd-\$ 8.00 3rd - \$7.00

MEMORIAL - In memory of Verna Coneybeare, Patio Planter featuring geraniums
Sponsored by James Coneybeare

- 1st - \$10.00 2nd - \$8.00 3rd - \$7.00

MEMORIAL – In memory of Mac Thompson – Judges Choice Award chosen from entries in the class, “Designs With Plant Material” - \$25
Sponsored by Phyllis Thompson

SPECIAL ACHIEVEMENT AWARD – For most points in Potted Plants and Cut Flowers

- 1st - \$50 gift certificate from Riverbend Gardens & Nursery
- 2nd - \$25 gift certificate from Zehrs Food Plus (Listowel)

SPECIAL ACHIEVEMENT AWARD – For most points in Floral Designs & Patio Planters & Hangers

- 1st - \$25 gift certificate from Listowel Greenhouses
- 2nd - \$25 gift certificate from Watson’s Home Hardware, Listowel

*Thank you to Watson’s Home Hardware, Listowel as well as all of our
Sponsors of Special Classes for their donations to the
Plants and Cut Flowers Competition*

VIRTUAL**PHOTOGRAPHY COMPETITION**

Chairperson: Tracey Fitton 519-292-6112 Tracey-Tracey@hotmail.com

Committee: Alana McEachern, Anne Laidlaw

*** * * After the success of the 2022 virtual photography competition, the committee has decided that going forward, the Photography Competition will be virtual only. * * ***

Photography entries will be accepted online starting June 1st!

To enter visit: <https://www.assistexpo.ca/listowel-agricultural-society>

Details for entering online appear at the beginning of the Advanced Prize List.

The chairperson will be happy to help you if you need assistance with entering your photos online.

Amateur Photography Rules:

1. Submit ORIGINAL digital photo in preferably jpg, jpeg, png or tiff image format.
2. Amateurs only, no professionals.
3. One image per person per category, unless otherwise specified.
4. Photograph by exhibitor only, taken within the last 2 years (unless specified), and only exhibited for 1 year.
5. Photographs not suitable for family viewing will not be judged or displayed.
6. Committee decisions are FINAL. Disqualified entries in open classes will not be displayed.
7. Photos will be judged on quality, clarity, originality and composition.
8. Photos will be put into a video to be shown during the duration of the fair and on social media and housed on the Listowel Fair YouTube channel.
9. Entrants agree to have their work displayed virtually and name in the local media.

OPEN TO ALL AGES – ONE PRINT ONLY

1. Listowel Fair 2022	12. Summer Scenery	23. Coffee (be creative!)
2. New Life	13. Fall Beauty	24. Children with Animals
3. Vintage	14. Winter Wonderland	25. Illuminated At Night
4. Group of People	15. Old Building	26. Colours in the Sky
5. Feathered Friends	16. Place of Worship	27. Dominant Colour
6. Cloud Formations	17. Agriculture	28. Sign
7. Laying Around	18. Field Crops	29. Tattoo
8. Reflections	19. Photobomb	30. Multicultural Food
9. Young Farmer(s) In Training	20. Lanes, Paths or Trails	31. Fancy Food Plating
10. Christmas	21. Chef's Creations	32. Cultural Diversity within Canada
11. Spring Flowers	22. Garden / House Plants	33. World Travel

OPEN TO ALL AGES – TWO PRINTS

34. Canada	39. Things with Wings
35. Black & White ~ Photographers Choice	40. Things with Tails
36. Zoom In / Zoom Out	41. Baby Bump to Baby Bundle
37. Beginning and End	42. Child / Children Playing Outdoors
38. Same Picture, Different Seasons	43. Made In Canada vs. NOT Made In Canada

Special

44. Feeding The World From Our Own Backyard

IN PERSON**SCRAPBOOKING & CARDMAKING**

Chairperson: Tracey Fitton 519-292-6112 Tracey-Tracey@hotmail.com

Committee: Alana McEachern, Anne Laidlaw

SCRAPBOOKING & CARDMAKING RULES:

1. No kits or computer generated scrapbook pages or cards accepted, unless requested.
2. All scrapbook pages **MUST** be mounted on a single page, except in 2 page layout categories. (No pocket-pages.)
3. Scrapbook pages must be 12"x12" and **MUST** be in protective sleeves.
4. Please do not send envelopes with the cards, unless requested.
5. Card Collections must come mounted on Bristol Board or Cardstock from exhibitor.
6. One entry per person, per category.
7. Amateurs only! No storeowners, representatives, designers or professionals.
**** NEW CATEGORY FOR PROFESSIONALS ONLY ****
8. Committee decisions are final. Disqualified entries in open and professional classes will not be displayed.

SCRAPBOOKING

ONE PAGE LAYOUT (open to all ages)	TWO PAGE LAYOUT (open to all ages) *must be taped or attached together*	Youth Scrapbooking – Ages 15 & under
1. Past Listowel Fair Memory	9. Staycation	14. Any Topic
2. Family / Friends	10. Celebration	
3. Sports	11. Fun in the Snow	
4. My Favourite Place	12. Animals	
5. School Days	13. World Travel	
6. Flowers / Plants		
7. Dominant Colour		
8. Food		

CARDMAKING

Open Cardmaking	Youth Cardmaking – Ages 15 & under
1. Thank You Card	10. Birthday Card
2. Birthday Card	11. Christmas Card
3. Christmas Card	12. Card for any occasion that includes FOOD
4. Congratulations Card	13. Agricultural Themed Card
5. Outside the Box	
6. 3-D or Pop-Up Card	
7. Humorous Card	
8. Card for any occasion that includes FOOD	
9. Agricultural Themed Card	

**** Professionals ONLY ****

1. Fun in the Sun Scrapbook Page	4. Christmas Card
2. Dominant Colour Scrapbook Page	5. Valentine's Day Card
3. Holiday Time Scrapbook Two-Page Layout	6. Card for any occasion that includes FOOD

CULINARY ARTS

CHAIRPERSON: Marilyn Whaley 519-291-7504
COMMITTEE: Robina Alexander, Marybelle Dittmer,
Brooklyn Johnston, Natalie Whaley

RULES AND REGULATIONS

All articles of food are to be sealed in clean Ziploc bags. No glass plates. Bread to be made previous to first day of fair. Paper liners are permitted **but should be removed** when exhibiting muffins. All cakes to be set on foil-covered cardboard (no mixes). Put labels on jams, jellies and pickles. Put in mason jar no larger than 500 ml sealed with Bernardin lids. Exhibitor tags to be attached to jars in Jam, Jellies and Pickles using elastics.

NOTE regarding buns and rolls - buns are joined and rolls are baked singly.

All prize money in Section 1 to 38
1st \$5.00, 2nd \$4.00, 3rd \$3.00

YEAST BREADS

1. Loaf of white bread, homemade
2. Loaf of 60% whole wheat bread, homemade
3. Buns, plain, joined (3)
4. Rolls, plain (3)
5. Cheese buns, joined (3)

QUICK BREADS

6. Rhubarb muffins (3)
7. Carrot muffins (3)
8. Tea biscuits, plain (3)
9. Lemon loaf (half loaf)
10. Banana loaf (half loaf)

COOKIES

11. Oatmeal raisin cookies (3)
12. Peanut butter cookies (3)
13. Ginger cookies (3)
14. Nanaimo bars (3)
15. No bake square (3) (No rice krispie squares)

CAKES AND PASTRY

16. Carrot cake, iced (4" square)
17. Chocolate cake, 8x8, single layer, iced
18. Date squares (3)
19. Chocolate fudge (3)
20. Apple pie, covered - exhibit ¼ of the pie on a suitable paper plate
21. Pecan pie - exhibit ¼ of the pie on a suitable paper plate
22. Lemon tarts, (3)

JAMS, JELLIES & PICKLES

23. Strawberry jam, cooked

24. Strawberry jam, freezer
25. Strawberry rhubarb jam, cooked
26. Rhubarb jam, cooked
27. Black currant jam, cooked
28. Raspberry jam, cooked
29. Two fruit jam, labeled
30. Any other jam/jelly not listed, labeled
31. Icicle pickles (one pint)
32. 7 or 9 day pickles (one pint)
33. Bread and butter pickles (one pint)
34. Dill Pickles (one pint)
35. Pickled beets (one pint)
36. Chili sauce (one pint)
37. Any other pickle, not listed, labelled (one pint)
38. Salsa sauce, mild (one pint)

39. PERTH WATERLOO EGG PRODUCERS

Prizes to be determined.

- 39a. Pickled Eggs, 1 pint
- 39b. Boiled salad dressing using eggs, 250 ml
- 39c. Three ways to serve eggs, appropriately displayed

40. LISTOWEL BANNER SPECIAL

Best pan of Baked Squares (9"x13"). We will retain a 4"square for display; display in a suitable box. Prize is a one-year subscription to The Listowel Banner. The Banner will retain winning squares. The non-winners may pick up the remainder of their squares after 4 pm on judging day.

41. HOOVER'S MAPLE SYRUP SPECIAL

BBQ sauce made using maple syrup, recipe to be included (1 cup)

Prize: 1st, 2nd and 3rd - maple syrup

42. EXECUTIVE DECISION

Sour cream raspberry pie, exhibit ¼ of the pie on a suitable paper plate

Winner will be determined by a judge and panel from the LAS Executive

Prize: \$15 donated anonymously

43. GAY LEA FOODS

Shortbread cookies using Gay Lea butter (3)

Prize: 1ST, 2nd and 3rd prizes

HEMECRAFT SPECIALS
Prize: 1st \$7.00, 2nd \$5.00, 3rd \$3.00

- 44. Loaf of raisin bread
- 45. Butter tarts without fruit (3) (see OAAS page in this booklet for rules)
- 46. Cupcakes (3) decorated, judged on decoration only, totally edible
- 47. Dutch butter cake (boeterkoek), one serving
- 48. Chocolate Chip cookie competition (see OAAS page in this booklet for rules)
Open to youth up to 15 yrs old (as of Dec. 31/22)
8 cookies to be no larger than 2.5" (6.5cm) and no smaller than 2" (5cm)
- 49. Liquid Honey (see OAAS page in this booklet for rules)
- 50. Maple Syrup (see OAAS page in this booklet for rules)

The winners of Class 45, 48, 49 & 50 are eligible to enter at the District 8 Annual Meeting competition. The winner at the district is eligible to compete at the provincial level.

JUNIOR CULINARY

Prize Money: 1st - \$5, 2nd - \$4, 3rd - \$3
No entry fee. Open to youth up to and including 16 years old.
To be shown in ziploc bags. NO saran wrap permitted.

- 1. Brownies (3)
- 2. Confetti squares (3)
- 3. Cake pops, decorated (3)
- 4. Your favourite after school snack, appropriately displayed and in a ziploc bag
- 5. No bake square, your family favourite (3)

Special!

Exhibitor with most points in Junior Culinary Classes 1-6 - \$5

Junior Specials

sponsored by In The Bag

- 6. Candy kabobs, 1 on a suitable plate in a ziploc bag
- 7. Trail mix, 1 cup in a Ziploc bag

Prizes to be determined

GENERAL COMPETITION RULES

(Note: there are no photography district competitions)



Rules

1. Competition is open to all exhibitors of member societies of the OAAS.
2. All work on the entry must be completed by the exhibitor entering the competition.
3. By entering an OAAS competition, the exhibitor agrees to allow their name and exhibit to be part of any promotional activities related to the competition.
4. Post the District/Provincial Competition Rules in your fair prize book or provide the OAAS competition website location.

District Competition

5. Each local fair is entitled to send one entry into each category of the District Competition. In the case where the fair is unable to send the 1st place winner to the district meeting, then the 2nd place winner will be eligible to enter.
6. Judging at the District Competitions is the responsibility of each OAAS District. Prize money to be paid by the district.
7. All district entries must be registered on the relevant OAAS Championship Entry Form, and returned to the OAAS Convention Administrator, by December 1st.

Provincial Competition

1. Each district is entitled to send one entry into each category of the Provincial Competition. In the case where the district is unable to send the 1st place winner to the convention, then the 2nd place winner is eligible to enter.
2. Judges who officiate the Competition at the Annual Convention will be appointed by the OAAS.
3. All entries must be received for judging by the Competition Committee in the designated area by 5pm on the Thursday afternoon of the Annual Convention of the OAAS. Please retain the ticket issued, to claim the entry when the viewing rooms close.
4. A number is assigned to each entry. Entries are only identified by this number during the judging process.
5. Please remove all tags, ribbons, or any other fair/exhibition identification from the entries.
6. No persons other than the judges and designated officials will be permitted to enter the designated judging room until after the judging and winners have been announced.
7. Any exhibitor or any person acting on behalf of the exhibitor who violates any of the Rules and Regulations or who interferes with the judges or the judging process, shall be disqualified and the entry will be removed from the competition.
8. No entry may be removed from the display area until the official closing of the viewing room and designated time of pick up.
9. The OAAS shall not be held liable for any loss occasioned by fire, theft, accident or the negligence of other exhibitors, officials or otherwise.
10. Any protests must be made to the Competition Committee of the OAAS in writing within 5 working days after the last day of the convention.
11. All entries will be judged using the OAAS Judging Standards. Copies of the OAAS Judging Standards can be purchased from the OAAS store at <https://oaasfairs.org/agricultural-society-info/store>.

BUTTER TART COMPETITION

(no fruit, no nuts)



Rules

1. Please review the General Competition Rules document.
2. Entry must be made solely by the person entering the competition. (including the pastry)
3. Number of butter tarts to be shown at local fair/exhibition to be determined by each individual fair/exhibition.

District Competition

1. A total of 6 tarts will be required to be shown. Tarts must be on a clean, sturdy plate (no paper plates) inside of a clear plastic bag with the exhibitor's name, mailing address and fair represented.
2. The size of the tarts must be full size tarts. (no mini or bite size tarts) and must not contain fruit or nuts (ie. no raisins, no pecans)
3. If the exhibitor has won at more than one fair, the one closest to the exhibitor's home address is the agricultural society from which the entry will be sent to the district competition. The other agricultural societies may send their second place winner into the district competition. An exhibitor may only enter into one district competition.

Provincial Competition

1. A total of 6 tarts will be required to be shown. Tarts must be on a clean, sturdy plate (no paper plates) inside of a clear plastic bag with the exhibitor's name, mailing address and district represented.
2. The size of the tarts must be full size tarts. (no mini or bite size tarts) and must not contain fruit or nuts (ie. no raisins, no pecans).
3. 1st and 2nd place entries will not be returned to exhibitor but will be placed up for auction at the convention.

Provincial Prize Money – 1st - \$50.00 2nd - \$30.00 3rd - \$20.00

Prizes donated by Gay Lea Foods Co-operative

Judging Standard

- 20** General Appearance
- 40** Crust
- 40** Filling

Rules for 2023 Fairs & 2024 Convention

PLAIN CHOCOLATE CHIP COOKIE COMPETITION

(no nuts)



Rules

1. Please review the General Competition Rules document.
2. Competition is open to youth up to age 15 years (as of December 31 of current year) of member societies of the OAAS.
3. Number of cookies to be shown at local fair/exhibition to be determined by each individual fair/exhibition.

District Competition

1. District entry must consist of 6 cookies displayed on a clean, sturdy plate (no paper plates) inside of a clear plastic bag with the exhibitor's name, mailing address and fair represented.
2. Plain chocolate chip cookies, with no nuts, must be no larger than 2.5" (6.5 cm) and no smaller than 2" (5 cm).
3. If the exhibitor has won at more than one fair, the one closest to the exhibitor's home address is the agricultural society from which the entry will be sent to the district competition. The other agricultural societies may send their second place winner into the district competition. An exhibitor may only enter into one district competition.

Provincial Competition

4. The entry for the district must consist of 6 cookies displayed on a clean, sturdy plate (no paper plates) inside of a clear plastic bag with the exhibitor's name, mailing address and district represented.
5. Plain chocolate chip cookies, with no nuts are to be no larger than 2.5" (6.5 cm) and no smaller than 2" (5 cm).

Provincial Prize Money: 1st - \$20.00 2nd - \$15.00 3rd - \$10.00

Judging Standard

- 25** General Appearance
- 25** Internal Appearance and Texture
- 50** Flavour

Rules for 2023 Fairs & 2024 Convention

LIQUID HONEY COMPETITION

Pure, Ontario #1, White



Rules:

Please review the General Competition Rules document.

Exhibitors of honey must be registered beekeepers and the exhibits shown by them must be pure honey from floral sources in their apiaries.

Entry must be made solely by the person or family entering the competition.

District Competition

1. Each agricultural society is entitled to send their best of show to the district competition.
2. If the exhibitor has won at more than one fair, the one closest to the exhibitor's home address is the agricultural society from which the entry will be sent to the district competition. The other agricultural societies may send their second place winner into the district competition. An exhibitor may only enter into one district competition
3. The OAAS will award a ribbon to exhibitors of winning entries at each district competition.

Provincial Competition

1. Liquid Honey exhibits shall consist of two clear glass containers, each having a capacity of 500 grams (375 ml).
2. Entries must be labelled on the BOTTOM of the containers only with a supplied entry number or identifier. No other labels will be permitted.
3. Any honey entry containing any form of foreign material will be disqualified from the competition.
4. An approved colorimeter will be used to assess the colour.
5. Honey will be judged using the standards printed in the *OAAS Agriculture & Horticulture Judging Standards for Ontario Fairs*.
6. It is a condition of entry that all honey products entered become property of the OAAS. 1st and 2nd place entries will be placed up for auction at the convention.

Judging Standards

Appearance 45 points

- | | |
|----|----------------------------|
| 15 | Density (moisture content) |
| 10 | Brightness |
| 10 | Flavour and aroma |
| 5 | Uniformity of honey |
| 5 | Colour |

Clarity 45 points

- | | |
|----|--|
| 15 | Free from crystals |
| 15 | Free from pollen, wax, etc. |
| 15 | Free from air bubbles either in suspension or as froth |

Containers 10 points

- | | |
|---|--|
| 5 | Pleasant appearance, of equal size and shape |
| 5 | Uniform level of fill |

Provincial Prize Money – 1st - \$50.00, 2nd - \$30.00, 3rd - \$20.00

Sponsored by the Ontario Beekeepers' Association

Rules for 2023 Fairs & 2024 Convention

MAPLE SYRUP COMPETITION

Pure Maple Syrup, Ontario Grade A – Amber.



Rules:

Please review the General Competition Rules document.

Entry must be made solely by the person or family entering the competition.

District Competition

Each agricultural society is entitled to send their best of show to the district competition.

If the exhibitor has won at more than one fair, the one closest to the exhibitor's home address is the agricultural society from which the entry will be sent to the district competition. The other agricultural societies may send their second place winner into the district competition. An exhibitor may only enter into one district competition.

The OAAS will award a ribbon to exhibitors of winning entries at each district competition.

Provincial Competition

Maple syrup exhibits shall consist of two (2) curved Kent style glass bottles (D&G #505188 Syrup Bottle with Handle), or equivalent, of Maple Syrup, Canada Grade A - Amber, each having a capacity of 250 mL.

Entries must be labelled on the BOTTOM of the containers only with a supplied entry number or identifier. No other labels will be permitted.

All maple syrup should have a flavour characteristic of its respective colour class and be free from any objectionable odour or taste. It is best to sample from the same lot before submitting your entries to the OAAS.

Any maple syrup entry containing any form of foreign material will be disqualified from the competition.

An approved maple syrup colorimeter will be used to assess the colour.

Maple syrup will be judged using the standards published by the OAAS in *Agriculture & Horticulture Judging Standards for Ontario Fairs*.

It is a condition of entry that all maple syrup products entered become property of the OAAS. 1st and 2nd place entries will be placed up for auction at the convention.

Judging Standards

30 Density
40 Flavour
20 Colour
10 Clarity

Provincial Prize Money – 1st - \$50.00, 2nd - \$30.00, 3rd - \$20.00

Rules for 2022 Fairs & 2023 Convention



4-H Competition!



Open to current 4-H members only.

Win prize money to help pay for your 2024 4-H membership fee!

No entry fee! 1st \$5; 2nd \$4, 3rd \$3

Classes 1-6 are open to all 4-H Ontario members. Classes 7-10 are open to all Cloverbud participants only.

A member does not necessarily have to have participated in a project on the topic in each category to be eligible to compete. Only one entry per 4-H member per class allowed. Competitors are to use their Listowel Fair competitor number. If the 4-H member is new to exhibiting, a number will be assigned at registration.

Please specify age of competitor on the entry form. If a class has more than six entries, the class will be divided into Junior (9-13 yrs. old) and Intermediate/Senior (14-21 yrs. old).

Entries will be accepted on Tuesday, July 11th (7pm-9pm) or Wednesday, July 12th (8am-11am).

Judging will take place Wednesday, July 12th from 12pm to 5pm. During this time, the Listowel Agricultural Hall will be closed to the public. **Your prize money will be mailed to you in August.**

Any questions? E-mail: listowelfair@gmail.com or call 519-291-0644.

Committee: Elizabeth Johnston, Tracey Fitton

-
1. Any knitted or crocheted article
 2. DNA strand made out of edible items (e.g. licorice, marshmallows, candy)
 3. Lego Creation – Create a farm vehicle or piece of farm machinery out of Lego. No restriction on size.
 4. A photo showing any aspect of 4-H, taken by the member or a photo of you participating.
 5. Your favourite cookie - please include recipe
 6. Any 4-H project not listed above.

Cloverbud 4-H Competition!

Open to current 4-H Cloverbud participants only (6-8 years old)

7. Colour a picture from Year Two of the Cloverbud Manual.
8. Create a collage using magazine / newspaper pictures of food grown in Ontario.
9. Paint a rock. Be creative.
10. Any Cloverbud project not listed.

SEWING AND NEEDLEWORK

Chairperson: Linda Robertson 519-356-2468

Committee: Bonna May, Everdina Bender, Pat Hogerwaard,
Donna Mitchell, Marion Knoblauch, Eleanor Petrie, Nora Verkley

PLEASE NOTE

- Only one article per person in each class.
- Entries must be the work of the exhibitor.
- New, up-to-date articles will be given preference.
- Work can only be shown for two consecutive years.
- Judges have been authorized to disqualify all soiled or old work.
- Please place completed fair tag with a safety pin to top left corner of item before entering it in the Fair.
- Please cover labels on the back of the item.

SEWING

Prizes: 1st: \$8.00 2nd: \$6.00 3rd: \$4.00

1. Fair theme item
2. Sewing tote
3. Pet accessories- any medium
4. Fabric snowflake
5. Fabric toddler's book
6. Counted cross stitch
7. Snuggle blanket
8. Christmas table runner
9. Cloth handbag or backpack
10. Tactile sensory, memory quilt, small lap quilt size. (no removable objects) This item will be judged and donated to a local Alzheimer Society.
11. Embroidered article- judged on embroidery workmanship
12. Sewn home décor item under 36"
13. Felted wool application
14. Apron
15. A sewn item using geometric design
16. Sleep pants
17. An item of child clothing
18. Fibre art article using modern techniques
19. Vest or jacket - any medium
20. Place mats- using three fabrics
21. Shopping bag -multi-use
22. Colour tinted, embroidery accented item
23. Table cloth

24. Microwave bowl holder
25. Needlework project not previously listed
26. Spring placemats
27. Wallhanging depicting snowman
28. Sewn item celebrating Canada Day
29. Christmas fabric centerpiece
30. Hallowe'en sewn item
31. Autumn table runner

Knitted Section

32. Child's hat
33. Adult Hat
34. Patterned socks
35. Hooded baby jacket
36. Adult slippers
37. Mittens
38. Scarf-knit with yarn
39. Child sweater
40. Adult sweater

Crochet Section

41. Animal toy
42. Child's hat
43. Adult hat
44. Scarf wrap
45. Slippers

Senior Citizen -over 60

***no membership required**

46. Knit scarf
47. Crib quilt
48. Crocheted hat and scarf
49. Knit socks with cabled detail
50. Counted cross-stitch framed

Youth Corner

***No entry fee**

51. Knit or crochet item
52. A sewn item

QUILTING

PLEASE NOTE

- Only one article per person in each class.
- Entries must be the work of the exhibitor.
- New, up-to-date articles will be given preference.
- Work can only be shown for two consecutive years.
- Judges have been authorized to disqualify all soiled or old work.
- Please place completed fair tag with a safety pin to top left corner of quilt top before entering it in the Fair.
- Please cover labels on the back of the item.

Prizes: 1st: \$8.00 2nd \$ 6.00 3rd \$4.00

Long Arm Section A

Item created by Exhibitor and Quilted by Exhibitor

1. Quilt - machine appliquèd and or embroidered, minimum 324"
2. Quilt- minimum 324"
3. Lap quilt- maximum 324"
4. Baby/Child Quilt
5. Abstract Quilt- minimum 324"
6. Quilt showcasing edge to edge pantograph
7. Christmas quilt any size
8. Table Runner
9. Wall Hanging

Long Arm Section B

Item created by Exhibitor and Quilted by Another (Longarm)- Recognize Quilter on Entry Tag.

Judging based on creation of Quilt

10. Quilt- machine appliquèd or embroidered, minimum 324"
11. Quilt- minimum 324"
12. Lap Quilt- maximum 324"
13. Baby/Child Quilt
14. Abstract Quilt- minimum 324"
15. Quilt showcasing edge to edge pantograph
16. Christmas quilt any size
17. Table Runner
18. Wall Hanging

Domestic Machine Section C

Item Created by Exhibitor and Quilted by Exhibitor

19. Quilt -machine appliquéed and /or embroidered
20. Quilt - pieced quilt any size
21. Lap Quilt
22. Baby/Child Quilt
23. Abstract Quilt
24. Quilt showcasing a linear edge to edge
25. Quilt as you go quilt
26. Table Runner
- 27 .Wall Hanging

Handquilting Section D

28. Quilt created by hand or embroidered-minimum 324"
29. Quilt- minimum 324"
30. Lap quilt- maximum 324"
31. Baby/Child Quilt
32. Abstract Quilt - minimum 324"
33. Quilt showcasing a linear edge to edge
34. Big Stitch quilting on any size quilt
- 35.Table Runner
36. Wall Hanging

Assorted Quilts

37. Quilt/panel, any size
38. Paper pieced quilt
39. Quilt, machine quilted any technique by two or more people
40. Quilt, any size, any other technique not listed
41. Bargello item

Quilting Specials

Prize: \$20.00

*Quilt, pieced and long arm or domestic machine quilted by exhibitor, minimum 324" Section A - Classes #1 and 2, Section C - Class #19

* Quilt, pieced by exhibitor and long arm quilted by another, Long Arm quilter recognized on entry tag. Section B - Classes # 10, 11, and 14

*Quilt, hand quilted, minimum 324" Section D - Classes #28 and 29

*Quilt completed by an organization or a group

Memorial- In memory of Verna Coneybeare

Sponsored by James Coneybeare

*Baby/Child Quilt - Judged by judges from Classes #4,13,22 and 31

Best of Show

Winner receives a Gift Certificate

Sponsored by Country Quilting, Pam McLellan

Special thanks to our sponsors:

E&E Cloth and Creations, Newton

Pins & Needles , 177 Main St. W., Listowel

Country Quilting, Pam McLellan, 84849 Ethel Line, Brussels

Quilt Block Challenge Invitation

The Rail Fence pattern has been chosen for the annual Quilt Block Challenge Quilt. Each participant will complete one kit/ one block. Kits can be picked up at Pins & Needles, 177 Main St. W., Listowel, or by phoning Linda Robertson 519-356-2468. The kit will be mailed to you free of charge.

The blocks need to be submitted to the Listowel Agricultural Society by Tuesday July 11 (7:00pm or 9:00 pm) or Wednesday, July 12 (9:00- 12:00 am)

Prizes: 1st \$25.00 2nd \$15.00 3rd \$ 10.00

After judging, the blocks become the property of The Listowel Agricultural Society. Using the blocks, the quilt will be pieced, quilted and sold as part of a fundraising event.

Thank you for supporting the 'Quilt Block Challenge 2023.' **Happy Quilting!**

HAND QUILTED COMPETITION

Rules:

1. Please review the General Competition Rules document.
2. The quilt must be solely made, and hand quilted by the exhibitor and exhibited and judged at a local Ontario Association of Agricultural Societies (OAAS) fair to be eligible for this competition.
3. Quilts to be measured on the perimeter. Total perimeter measurement to be a minimum of 324 inches. Note the quilt can be square, rectangular etc. All 4 sides must be measured to determine the perimeter measurement.
4. The quilting must be through all 3 layers (top, batting and back) and not be mounted on a frame. The quilt may have a sleeve attached to the back for the purpose of hanging the quilt.
5. The winning OAAS Hand Quilt will not be eligible to compete in any future OAAS fair, district and/or provincial competitions.
6. It is the exhibitor's responsibility to give credit to the original designer of the quilt pattern based on copyright rules.



District Competition

7. Each local fair is entitled to send their best of show of all eligible hand quilts to the district competition.
8. If the fair's best of show hand quilt has won at more than one fair, the exhibitor must consider their own agricultural society as the one from which the quilt will be sent to the district meeting, otherwise it should be sent from the agricultural society nearest his/her home address. The other fairs at which this quilt was entered and won, may enter their second best of show hand quilt into the district competition.
9. An exhibitor who wins more than one best of show title with different hand quilts at different fairs is entitled to enter each winning quilt in the district competition.
10. If an exhibitor is exhibiting in more than one district, they are entitled to enter different winning quilts at different district competitions but cannot enter the same quilt at more than one district competition.
11. The OAAS will award a ribbon to exhibitors of winning hand quilts at each district competition.
12. A photo of the top three placed hand quilts at the district competition must accompany the "OAAS Championship Quilt Entry Form"

Provincial Competition

13. A \$500.00 GRAND PRIZE and rosette will be awarded. The exhibitor will retain ownership of the quilt.

14. A \$100 RESERVE GRAND PRIZE will be awarded. The exhibitor will retain ownership of the quilt.

Judging Standards

25 General Appearance & Design

20 Colour & Materials

55 Workmanship

30 Quilting

10 Borders

15 Binding and Picots

Rules for 2023 Fairs & 2024 Convention

MACHINE QUILTED COMPETITION



Rules:

1. Please review the General Competition Rules document.
2. The quilt must be solely made, and machine quilted by the exhibitor and exhibited and judged at a local Ontario Association of Agricultural Societies (OAAS) fair to be eligible for this competition.
3. Quilts to be measured on the perimeter. Total perimeter measurement to be a minimum of 324 inches. Note the quilt can be square, rectangular etc. All 4 sides must be measured to determine the perimeter measurement.
4. The quilting must be through all 3 layers (top, batting and back) and not be mounted on a frame. The quilt may have a sleeve attached to the back for the purpose of hanging the quilt.
5. The winning OAAS Machine Quilt will not be eligible to compete in any future OAAS fair, district and/or provincial competitions.
6. It is the exhibitor's responsibility to give credit to the original designer of the quilt pattern based on copyright rules.
7. The use of domestic, mid arm and/or long arm equipment is permitted on hand or computer guided machine quilt entries.

District Competition

1. Each local fair is entitled to send their best of show of all eligible machine quilts to the district competition.
2. If the fair's best of show machine quilt classes has won at more than one fair, the exhibitor must consider their own agricultural society as the one from which the quilt will be sent to the district meeting, otherwise it should be sent from the agricultural society nearest his/her home address. The other fairs at which this quilt was entered and won, may enter their second best of show machine quilt in the district competition.
3. An exhibitor who wins more than one best of show title with different machine quilts at different fairs is entitled to enter each winning quilt in the district competition.
4. If an exhibitor is exhibiting in more than one district, they are entitled to enter different winning quilts at different district competitions but cannot enter the same quilt at more than one district competition.
5. The OAAS will award a ribbon to exhibitors of winning machine quilts at each district competition.
6. A photo of the top three placed machine quilts at the district competition must accompany the "OAAS Championship Quilt Entry Form"

Provincial Competition

7. All quilts entered in the competition must be machine quilted.
8. A \$500.00 GRAND PRIZE and rosette will be awarded. The exhibitor will retain ownership of the quilt.
9. A \$100 RESERVE GRAND PRIZE will be awarded. The exhibitor will retain ownership of the quilt.

Judging Standards

25	General Appearance & Design
20	Colour & Materials
55	Workmanship
30	Quilting
10	Borders
15	Binding and Picots

Rules for 2023 Fairs & 2024 Convention



Farm Safety Youth Competition!

Contact Person: Elizabeth Johnston, 519-291-0644; listowelfair@gmail.com

Committee: Tracey Fitton, Marybelle Dittmer, Carolyn van der Heiden, Nancy Schildroth

Prize money will be provided by the Listowel Agricultural Society.

1st - \$5; 2nd - \$4; 3rd - \$3

School work will be picked up from the schools by Monday, June 26, 2023 and will be judged on Tuesday, July 4, 2023. Home-school entries welcome! Listowel Fair will make every effort to display all entries; however, if display area is limited, only prize-winning entries will be displayed.

Name of school must appear on entry tag.

Class F: Farm Safety

Class FSJK (Junior Kindergarten):

Colour the picture of the cat provided, labeled Class FSJK. Trace the word cat at the top of the page.

Class FSSK (Senior Kindergarten):

Colour the picture of the dog provided, labeled Class FSSK. Print the word 'dog' on the line at the top of the page.



Class FS1 (Gr. 1) Animal Safety:

Connect the dots and colour the animal on the page labeled Class FS1. Print, in your own printing, the following message at the bottom of the picture: "Be careful around horses or other animals on the farm and at the fair."

Class FS2 (Gr. 2) Tractor Safety:

Using a blank 8 1/2" X 11" sheet of paper, create a picture of a tractor or riding lawn mower using geometric shapes made from coloured paper. Below your picture print a tractor or lawn mower safety message.



Class FS3 (Gr. 3) Sun Safety:

Using a variety of art materials, design a t-shirt to wear in the sun, using the work page labeled Class FS3. Include a message on the shirt showing the importance of wearing a shirt when in the sun.



Class FS4 (Gr. 4) Fire Safety:

On a blank 8 1/2" X 11" sheet of paper, draw a fire escape plan for your home. Show the location of fire extinguishers and smoke alarms.

Class FS5 (Gr. 5) Farm/Home Safety:

Recreate the picture on the top of the workpage labeled Class FS5, correcting the dangers in the original picture.

Class FS6 (Gr. 6) Safety:

Using a blank piece of 11" x 14" paper, create a farm safety poster on a topic of your choice. Include a message warning of the danger of the activity and what should be done to do the activity safely. Or, poster could focus on the mental health struggles that come with farming and tips for coping and where to find help.

Class FS7 (students with special needs):

Using a blank 8 1/2" X 11" sheet of paper, make a picture of any safety topic. (a child can enter this category even if he or she is in a regular classroom).

Youth Poster Competition



Contact Person: Elizabeth Johnston,
519-291-0644

Three Classes:

- A) Junior - Youth up to & including Grade 4
- B) Intermediate - Youth Grade 5 to Grade 8
- C) Senior - Youth Grade 9 to 12

Criteria for youth poster classes:

Must be an original hand made (hand drawn) design.

Must include the name and dates of the **Listowel Fair (July 13-16, 2023)**.

Must also include Fair Theme slogan **'Feeding the World From Our Own Backyard'** as it relates to agriculture and food in our area.

Poster Size: Minimum 22cm X 28cm to a Maximum 28cm X 44cm, without border.

Entries are not to be mounted on artcard or Bristol board. The winning entry in each category will be mounted by the Listowel Agricultural Society before competing at the District level.

On the back of each poster please include the following:

Student/Entrant name, grade level and full name of school

Judging Criteria

- 1) Overall appearance: 50 points
- 2) Hand Drawn : 35 points
- 3) OAAS Criteria (size, material, theme): 15 points

The winning poster from each class will compete at a district competition. The winning poster of the district will compete at the provincial level.

Prizes for each class: 1st \$15; 2nd \$10; 3rd \$5

Judging of the posters will take place on July 12, 2023 from 12pm to 5pm.

Youth Poster Competition sponsored in memory of Ruth Robinson



Listowel Fair School Work Competition!



Contact Person: Elizabeth Johnston 291-0644; listowelfair@gmail.com;

Committee: Carolyn van der Heiden, Tracey Fitton, Marybelle Dittmer, Nancy Schildroth

Prize Money for all classes: 1st, \$3; 2nd, \$2; 3rd, \$1; Except murals; 1st, \$10; 2nd, \$8; 3rd, \$6.

School work will be picked up from the schools by Monday, June 26, 2023 and will be judged on Tuesday, July 4, 2023. Listowel Fair will make every effort to display all entries; however, if display area is limited, only prize-winning entries will be displayed.

Name of school must appear on entry tag.

Special: The school with the most prize-winning entries will receive \$100!

Daycare & Nursery School

Class AD

Make a paper bag puppet that looks like a farm animal. Colour and decorate the puppet using a variety of craft supplies.

Class DD

Colour the picture provided labeled for Class DD. Please include the age of the child on the back of the picture.

Class E1

On large mural paper write the words '**Feeding the World From Our Own Backyard**' (the theme of the 2023 Listowel Fair) with the mural showing the various crops grown and livestock raised in this area that help to feed the world. Have the students decorate the mural using different materials, patterns and designs to depict the theme. Mural to be a maximum of 10 feet long. One entry per class allowed.



Junior Kindergarten

Class AJK

Using a small (6 or 7 inch) paper plate, create a barnyard animal. Colour, paint or decorate the animal using a variety of craft supplies.

Class BJK

Print your first name on a blank 5"X7" paper.

Class CJK Draw a picture of a crop that is grown in this area and label, in French, the name of the crop using an 8 1/2" x 11" piece of paper.

Class DJK

Colour the picture provided labeled for Class DJK.

Senior Kindergarten

Class ASK

Using old magazines, cut out and create a mismatched vehicle on an 8 1/2" x 11" sheet of paper (e.g. tractor tires on a bicycle). Maximum of 3 different vehicle parts.

Class BSK

Print your school's name on a blank 5"X7" paper

Class CSK Draw a picture of a crop that is grown in this area and label, in French, the name of the crop using an 8 1/2" x 11" piece of paper.

Class DSK

Colour the picture provided labeled for Class DSK.



Class E2 (JK & SK)

On large mural paper write the words '**Feeding the World From Our Own Backyard**' (the theme of the 2023 Listowel Fair) with the mural showing the various crops grown and livestock raised in this area that help to feed the world. Have the students decorate the mural using different materials, patterns and designs to depict the theme. Mural to be a maximum of 10 feet long. One entry per class allowed.

Grade One

Class A1

Using paper no larger than 8 1/2" x 11", create a "shape outline of a vehicle" using geometric shapes, mounted on black construction paper.

Class B1 Print the following poem on lined paper.

The Seed

*Plant me in the earth
Give me water each day
I'll grow to be a crop
While you play*

Class C1 Draw and label, in French, two crops that are grown in this area, using an 8 1/2" x 11" piece of paper.

Class D1 Colour the picture provided labeled for Class D1.

Class E3 (Grades 1 & 2)

On large mural paper write the words 'Feeding the World From Our Own Backyard' (the theme of the 2023 Listowel Fair) with the mural showing the various crops grown and livestock raised in this area that help to feed the world. Have the students decorate the mural using different materials, patterns and designs to depict the theme. Mural to be a maximum of 10 feet long. One entry per class allowed.



Class B9 (OPEN TO ANY GRADE): Cursive writing.

Entrants can write out any existing poem on lined paper. Poem to be 16 to 24 lines long and should be related to the theme of the fair. Topics can focus on anything related to the food grown in this area or agricultural fairs. Use your imagination!

Grade Two



Class A2

Using two small (6 or 7 inch) paper plates, create a unique fish. Colour, cut, paint, glue and decorate the fish using a variety of craft supplies, keeping in mind that glitter and heavier items may not stay on when the fish are being transported. A maximum of 2 paper plates may be used to complete this task.

Class B2 Print the following poem on lined paper.

I Plant A Little Seed

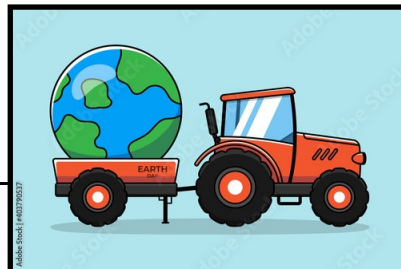
*I plant a little seed in the cold, cold ground
Out comes the yellow sun, big and round
Down come the raindrops soft and slow
Up comes the plant grow, grow, grow!*

Class C2 Draw and label, in French, two crops that are grown in this area, using an 8 1/2" x 11" piece of paper.

Class D2 Colour the picture provided labeled for Class D2.

Class E3 (Grades 1 & 2)

On large mural paper write the words 'Feeding the World From Our Own Backyard' (the theme of the 2023 Listowel Fair) with the mural showing the various crops grown and livestock raised in this area that help to feed the world. Have the students decorate the mural using different materials, patterns and designs to depict the theme. Mural to be a maximum of 10 feet long. One entry per class allowed.



Grade Three

Class A3

Create a paper mosaic initial. Using their first initial, have students use carefully sliced complimentary colours. Creations may be mounted on any colour of paper. Maximum size of paper to be 8 1/2" x 11".



Class B3 Print the following poem on lined paper.

The Farm

*I see bunnies hopping
I hear birds chirping in the trees
I smell alfalfa growing in the field
I taste vegetables growing in the garden
I see cattle in the field eating grass
The barns for the cattle, pigs, chickens,
goats and sheep stand stately
I see the farm tractor working in the field
I watch the farmer as he grows our food
This food will feed the world including
you and I*

Class C3 Draw and label, in French, three crops that are grown in this area, using an 8 1/2" x 11" piece of paper.

Class D3 Choose one of the 10 Character Attributes (Respect, Responsibility, Honesty, Integrity, Compassion, Courage, Empathy, Fairness, Optimism, Perseverance). Create a bookmark and put this attribute on it. Decorate the bookmark using a variety of craft supplies.

Class E4 (Grades 3 & 4)

On large mural paper write the words 'Feeding the World From Our Own Backyard' (the theme of the 2023 Listowel Fair) with the mural showing the various crops grown and livestock raised in this area that help to feed the world. Have the students decorate the mural using different materials, patterns and designs to depict the theme. Mural to be a maximum of 10 feet long. One entry per class allowed.

Grade Four

Class A4

Using the template provided labeled Class A4, create a 'My Emotions Wheel.'



Class B4

Print the following poem on lined paper.

Life of a Plant

*A plant will grow from a tiny seed,
Some soil, water and sun is all you need.
First the roots grow underground,
They suck up minerals from all around.*

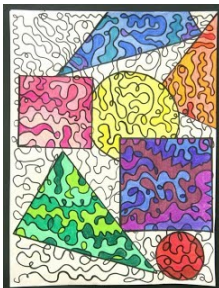
*Then comes stems, some tall, some stout,
And next the branches spread about.
Leaves grow in all shapes and sizes,
Watch this new life as it rises.*

*Flowers bloom from buds on stems,
They are as pretty as precious gems.
Some plants give us juice fruit,
Some have vegetables at the root.*

*New seeds travel to and fro,
By wind and water, on the go.
And the cycle keeps on going,
Some new stems and leaves are showing.*

Class C4 Using either an online comic strip creator or by drawing a comic strip, create a comic strip on an 8 1/2" x 11" piece of paper that includes the following words and expressions: Bonjour. A demain. Comment t'appelles-tu? Comment ça va? Tu es de quelle ville?

Class D4 Create a one line continuous art project. Use at least four different polygons (e.g. triangle, rectangle, square, hexagon, circle, etc.) in your design.



Class E4 (Grades 3 & 4)

On large mural paper write the words 'Feeding the World From Our Own Backyard' (the theme of the 2023 Listowel Fair) with the mural showing the various crops grown and livestock raised in this area that help to feed the world. Have the students decorate the mural using different materials, patterns and designs to depict the theme. Mural to be a maximum of 10 feet long. One entry per class allowed.

Class B9 (OPEN TO ANY GRADE):

Cursive writing.

Entrants can write out any existing poem on lined paper. Poem to be 16 to 24 lines long and should be related to the theme of the fair. Topics can focus on anything related to the food grown in this area or agricultural fairs. Use your imagination!

Grade Five

Class A5

In 50 words or less, name your favourite food and list all of the ingredients that a farmer would have to grow for you to make your favourite food. Print on an 8 1/2" X 11" piece of lined paper. Use illustrations if desired.

Class B5 Print the following poem on lined paper.

Farming Technology

*Farming has been around
Ever since time began
The technique has been remarkable
Different methods to work the land*

*We have come a very long way
From the horse and plows, you know
Changing slowly through the years
Modern pictures sure make it so*

*They were designed to take a swath
Wide and smooth and clean
From a field that goes for miles
As far as the eye has seen*

*Don't you think they're beautiful?
These modern day tractors and such
Astonishing their sizes are
They have that 'farming' touch
But I suppose new technology
Has to grow as time moves on
Because of the enormous population
The horse and plow couldn't last for long!*

By Marilyn Lott

Class C5 Using a 8 1/2" x 11" piece of paper, create a drawing of at least four different types of livestock raised in this area and one type of housing they would live in. In French, label all types of livestock drawn and describe the housing.

Class D5 Create a self identity through tracing. Using 11" x 17" paper, have students trace both their feet and hands on the page. Have them make a self portrait, creating the remaining body and facial expressions.



Grade Six

Class A6

Choose a seed and glue it on a piece of paper. Draw the root system and the plant that will grow from this seed. Label what type of seed it is. Create on 8 1/2" x 11" paper.

Class B6 Print the following poem on lined paper.

Golden Wheat Fields

*Driving down that red dirt road
I take a deep gulp of air
Ah yes, I love those wheat fields
Any worries will quickly repair*

*Huge machines ready to work
And to reap that golden land
The crops are ripe and ready to cut
With the massive combine head*

*Workers sweat and toil in the sun
From early morning till dark
Then up again when the dew is gone
They have that farmer's spark*

*The bales are huge and round
All rolled with an impressive machine
Just the way they like them
Yep, those bales are a farmer's dream*

*If you ever get a chance
Watch those people as they work
All things will come into balance
As they labour in that dirt!*

Class C6 Using a 8 1/2" x 11" piece of paper, create a drawing that looks like a picture taken by a drone in the sky looking down on a farm. Label, in French, at least five things the drone saw on the ground.

Class D6

Create an inspirational hand doodle. Have students trace their hand and then add lines and motivational messages, words of motivation or simply the Character Attributes throughout. The attributes can be found at: <http://www.northperthcoc.com/attributes.html>



Class E5 (Grades 5 & 6)

On large mural paper write the words 'Feeding the World From Our Own Backyard' (the theme of the 2023 Listowel Fair) with the mural showing the various crops grown and livestock raised in this area that help to feed the world. Have the students decorate the mural using different materials, patterns and designs to depict the theme. Mural to be a maximum of 10 feet long. One entry per class allowed.

Class B9 (OPEN TO ANY GRADE): Cursive writing. Entrants can write out any existing poem on lined paper. Poem to be 16 to 24 lines long and should be related to the theme of the fair. Topics can focus on anything related to the food grown in this area or agricultural fairs. Use your imagination!

Grade Seven

Class A7

Using various seeds, create an artistic design using the student's first name as the focus of the design. Create on 8 1/2" x 11" paper/cardstock.

Class B7 Print the following poem on lined paper.

Dedicated to the Farmers of the World

*This poem is dedicated to the farmers of the world,
Who have worked hard to focus their energy that swirled,
To supply us with food through hard work and dedication,
For without their effort most would die of starvation,*

*An ancient art of farming dates back to prehistoric times,
That has developed even further over many lifetimes,
Farming has built the foundation of every civilization,
For without farming there could not be a single nation,*

*Raising crops, poultry, and livestock is not an easy task,
Working for hours under the scorching sun these farmers bask,
Raising orchards and vineyards with the resources at hand,
Using skills and technology to enhance their own farmland,*

*These hard working agriculturists should be given more appreciation,
Because without them we could not have evolved into a nation,
They keep civilization in existence, they enable us to survive,
Without farmers, most of us would not be alive!*

By Daya Nandan

Class C7 Using a 8 1/2" x 11" piece of paper, create an artistic display using one of the French interjections below:

- * Attention!
- * Silence!
- * Brrr!
- * Bravo!
- * D'accord!
- * or one of your own choosing

Entry must be hand drawn.



Class D7 Using the word "Google", create a google doodle on an 8 1/2" x 11" paper. Entry must be hand drawn.



Grade Eight

Class A8

Using various seeds, create an artistic design featuring a map/outline of the continents of the world on 8 1/2" x 11" paper/cardstock.



Class B8 Print the following poem on lined paper.

Harvest Celebration

*Completion of the harvest, is a time to celebrate,
Leaves on trees are yellowing, around the whole estate,
Barns and bins are full to bursting, for winter now is here,
In olden days it was the same, to grow still takes a year.*

*A lot more hand work then, more men worked upon the land,
Ploughed with horses an acre a day, seed was sown by hand,
Good rotation of all the crops, kept most weeds at bay,
At harvest stood sheaves up in stooks, for two church bells they must stay.*

*Into bays or ricks were built, threshed out as needed through the year,
Wheat went to the mill to be ground, flour for bread we do revere,
Oats to feed the cattle and horses, and some for porridge bound,
To feed the men and families who, work on the land all year round.*

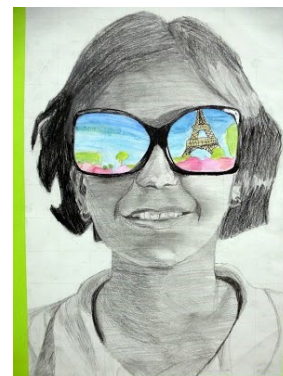
*Mechanized now and fewer people, but crops still grow the same,
Sunshine and warmth in the spring, showers to grow good crops the aim,
In nature nothing really changes, seasons come and go,
To keep us on the land we all love, its food for everyone we grow.*



AGRICULTURAL SOCIETY

Class C8 Using a 8 1/2" x 11" piece of paper, create a poster/ad "en Francais" promoting the Listowel Fair, highlighting the many events that take place throughout the weekend.

Class D8 Create a shades of summer poster. Draw a "selfie" with sunglasses projecting the thing you're most looking forward to in summer. Create your poster on paper no larger than 11" x 17".



Class E6 (Grades 7 & 8)

On large mural paper write the words '**Feeding the World From Our Own Backyard**' (the theme of the 2023 Listowel Fair) with the mural showing the various crops grown and livestock raised in this area that help to feed the world. Have the students decorate the mural using different materials, patterns and designs to depict the theme. Mural to be a maximum of 10 feet long. One entry per class allowed.