

168th Listowel Agricultural Fair

July 18-21, 2024



AGRICULTURAL SOCIETY

Farming Fast Forward



Homecraft Advanced Prize List

www.listowelfair.com

@listowelfair

LISTOWEL AGRICULTURAL SOCIETY ADVANCED PRIZE LIST 2024

Thank you for picking up one of the advanced prize lists for the 168th Listowel Fair!

The fair dates are July 18 to 21, 2024

and our theme is

"Farming Fast Forward"

You are welcome to pick up an entry form and tags at Pins & Needles (177 Main St. W., Listowel, open Mon. to Fri. 9am to 5:30pm & Sat. 9am to 4:30pm), The Scrapbook Shop (163 Inkerman St W, Listowel, open Tues. to Fri. 11am to 5pm & Sat. 11am to 2pm) or just give us a call and we will be happy to mail it to you. We use the same exhibitor numbers year after year, so if you remember your number you can use it. If you are new to exhibiting or cannot remember your exhibitor number, give us a call or email us (listowelfair@gmail.com) and we'll get you one! If you have any questions regarding the prize list, there is a committee chairperson listed at the top of each category. Please do not hesitate to contact them. They will be happy to help you.

Exhibits will be accepted Tuesday July 16 (7pm to 9pm) or Wednesday July 17 (8am to 11am). Judging will take place Wednesday, July 17 from 12:30pm to 5pm. The Agricultural Hall will be closed for judging and will be open to the public starting at 10am on Thursday, July 18, 2024.

Homecraft exhibits are to be picked up from the Agricultural Hall from 4:30pm-5:30pm on Sunday, July 21 or on Monday, July 22 between 10:30am to noon.

Your prize money will be mailed to you in August.

The Homecraft Contacts for the Agricultural Society are:

Marybelle Dittmer, 519-291-1390; Elizabeth Johnston, 519-291-0644; listowelfair@gmail.com

Thank you for your interest and support of the Listowel Agricultural Society. We look forward to seeing you and your exhibits at **The Listowel Fair "Where the Town & Country Meet."**

Entries can be submitted online ahead of time!

See the next page for details.

Entry forms can be submitted online starting June 1st, 2024 with entries accepted at the dates/times listed on the previous page. Find the entry form at:

<https://www.assistexpo.ca/listowel-agricultural-society>

Paper copy entry forms will also be accepted.

Instructions for submitting an entry form online AND/OR for entering a virtual competition:

1. Visit: <https://www.assistexpo.ca/listowel-agricultural-society>
2. Create a new exhibitor profile with your name and contact information (if you have exhibited in the past, your profile will be matched up with the exhibitor number you have used in previous years)
3. Click on 'Add Entry' (found at the top of the page)
4. Click on the sections/classes you want to enter
5. If entering a virtual competition, upload your photo
6. A summary page will appear. If you aren't done entering yet, click on 'Add Entry' at the top of the page.
7. To finalize your entries, click submit - you will receive an email confirmation of your entries. You can still add more entries to your exhibitor profile after this.
8. Please bring your confirmation with you when dropping off your items.

NOTE: if you have more than one person in your household entering in the Listowel Agricultural Fair, you can add them in under your profile by clicking on 'Add Exhibitor' at the top of the page.

CULINARY ARTS

CHAIRPERSON: Marilyn Whaley 519-291-7504

COMMITTEE: Robina Alexander, Marybelle Dittmer, Brooklyn Johnston, Natalie Whaley

RULES AND REGULATIONS

All articles of food are to be sealed in clean Ziploc bags. No glass plates. Bread to be made previous to first day of fair. Paper liners are permitted **but should be removed** when exhibiting muffins. All cakes to be set on foil-covered cardboard (no mixes). Put labels on jams, jellies and pickles. Put in mason jar no larger than 500 ml sealed with Bernardin lids. Exhibitor tags to be attached to jars in Jam, Jellies and Pickles using elastics.

NOTE: regarding buns and rolls, buns are joined and rolls are baked singly.

All prize money in Section 1 to 40

1st \$5.00, 2nd \$4.00, 3rd \$3.00

YEAST BREADS

1. Loaf of white bread, homemade
2. Loaf of 60% whole wheat bread, homemade
3. Loaf of raisin bread, homemade
4. Buns, plain, joined (3)
5. Rolls, plain (3)
6. Cheese buns, joined (3)

QUICK BREADS

7. Rhubarb muffins (3)
8. Any muffins made with fruit, labelled (3)
9. Tea biscuits, plain (3)
10. Lemon loaf (half loaf)
11. Banana loaf (half loaf)

COOKIES

12. Oatmeal raisin cookies (3)
13. Peanut butter cookies (3)
14. Ginger cookies (3)
15. Brownies with nuts, iced (3)
16. No bake square (3) (No Rice Krispie squares)

CAKES AND PASTRY

17. Carrot cake, iced (4" square)
18. Chocolate cake, single layer, iced (4" square)
19. Date squares (3)
20. Chocolate fudge (3)
21. Dutch apple pie - exhibit ¼ of the pie on a suitable paper plate
22. Cream puffs/eclairs (3)
23. Butter tarts with raisins (3)

JAMS, JELLIES & PICKLES

24. Strawberry jam, cooked
25. Strawberry jam, freezer
26. Strawberry rhubarb jam, cooked
27. Rhubarb jam, cooked
28. Raspberry jam, cooked
29. Two fruit jam, labelled
30. Any other freezer jam not listed, labelled
31. Any other cooked jam/jelly not listed, labelled

- 32. Icicle pickles (one pint)
- 33. 7 or 9 day pickles (one pint)
- 34. Bread and butter pickles (one pint)
- 35. Dill Pickles (one pint)
- 36. Pickled beets (one pint)
- 37. Chili sauce (one pint)
- 38. Any other pickle, not listed, labelled
- 39. Salsa sauce, mild (one pint)
- 40. Barbecue sauce

41. PERTH WATERLOO EGG PRODUCERS

Prizes

- 41a. Pickled Eggs, 1 pint
- 41b. Boiled salad dressing using eggs, 250 ml
- 41c. Coconut Macaroons (3)

42. LISTOWEL BANNER SPECIAL

Best pan of Baked Squares (9"x13"). We will retain a 4" square for display; display in a suitable box. Prize is a one-year subscription to The Listowel Banner. The Banner will retain winning squares. The non-winners may pick up remainder after 4 pm on judging day

43. HOOVER'S MAPLE SYRUP SPECIAL

Granola made using maple syrup, 1 cup in a ziploc bag (recipe included)

Prize: 1st, 2nd and 3rd - maple syrup

44. MEN ONLY CLASS

- 44a. Microwave peanut brittle (3 pieces)
- 44b. Baked beans, 1 cup in a suitable container

45. GAY LEA FOODS

Shortbread cookies, plain using Gay Lea butter (3)

Prize: 1st, 2nd and 3rd prizes

HEMECRAFT SPECIALS

Prize: 1st \$7.00, 2nd \$5.00, 3rd \$3.00

- 46. Loaf of sourdough bread
- 47. Rice Krispies used in a non traditional way.
- 48. Dutch butter cake (boeterkoek), one serving

OAAS SPECIALS

- 49. Butter tarts without fruit (3)
- 50. Chocolate Chip cookie competition (3)
Class 50 - Open to youth up to 15 yrs old (as of Dec. 31/24)
- 51. Maple syrup
- 52. Honey

The winners of Classes 49 to 52 are eligible to enter at the District 8 Annual Meeting competition. The winner at the district is eligible to compete at the provincial level.

JUNIOR CULINARY

Prize Money: 1st - \$5; 2nd - \$4; 3rd - \$3

No entry fee. Open to youth up to and including 16 years old.

To be shown in ziploc bags. NO saran wrap permitted.

1. Brownies (3)
2. Confetti squares (3)
3. Three cupcakes decorated, must be totally edible, judged on decoration only
4. Your favourite after school snack, appropriately displayed and in a ziploc bag
5. No bake square, your family favourite (3)

Special!

Exhibitor with most points in Junior Culinary Classes 1-5 - \$5

Junior Specials sponsored by In The Bag

6. Candy kabobs, 1 on a suitable plate in a ziploc bag
7. Trail mix, 1 cup in a Ziploc bag

Prizes to be determined

PLAIN CHOCOLATE CHIP COOKIE COMPETITION

(no nuts)



Rules

1. Please review the General Competition Rules document.
2. Competition is open to youth up to age 15 years (as of December 31 of current year) of member societies of the OAAS.
3. Number of cookies to be shown at local fair/exhibition to be determined by each individual fair/exhibition.

District Competition

1. District entry must consist of 6 cookies displayed on a clean, sturdy plate (no paper plates) inside of a clear plastic bag with the exhibitor's name, mailing address and fair represented.
2. Plain chocolate chip cookies, with no nuts, must be no larger than 2.5" (6.5 cm) and no smaller than 2" (5 cm).
3. If the exhibitor has won at more than one fair, the one closest to the exhibitor's home address is the agricultural society from which the entry will be sent to the district competition. The other agricultural societies may send their second place winner into the district competition. An exhibitor may only enter into one district competition.

Provincial Competition

4. The entry for the district must consist of 6 cookies displayed on a clean, sturdy plate (no paper plates) inside of a clear plastic bag with the exhibitor's name, mailing address and district represented.
5. Plain chocolate chip cookies, with no nuts are to be no larger than 2.5" (6.5 cm) and no smaller than 2" (5 cm).

Provincial Prize Money: 1st - \$20.00 2nd - \$15.00 3rd - \$10.00

Judging Standard

- | | |
|----|---------------------------------|
| 25 | General Appearance |
| 25 | Internal Appearance and Texture |
| 50 | Flavour |

BUTTER TART COMPETITION

(no fruit, no nuts)



Rules

1. Please review the General Competition Rules document.
2. Entry must be made solely by the person entering the competition. (including the pastry)
3. Number of butter tarts to be shown at local fair/exhibition to be determined by each individual fair/exhibition.

District Competition

1. A total of 6 tarts will be required to be shown. Tarts must be on a clean, sturdy plate (no paper plates) inside of a clear plastic bag with the exhibitor's name, mailing address and fair represented.
2. The size of the tarts must be full size tarts. (no mini or bite size tarts) and must not contain fruit or nuts (ie. no raisins, no pecans)
3. If the exhibitor has won at more than one fair, the one closest to the exhibitor's home address is the agricultural society from which the entry will be sent to the district competition. The other agricultural societies may send their second place winner into the district competition. An exhibitor may only enter into one district competition.

Provincial Competition

1. A total of 6 tarts will be required to be shown. Tarts must be on a clean, sturdy plate (no paper plates) inside of a clear plastic bag with the exhibitor's name, mailing address and district represented.
2. The size of the tarts must be full size tarts. (no mini or bite size tarts) and must not contain fruit or nuts (ie. no raisins, no pecans).
3. 1st and 2nd place entries will not be returned to exhibitor but will be placed up for auction at the convention.

Provincial Prize Money – 1st - \$50.00 2nd - \$30.00 3rd - \$20.00

Prizes donated by Gay Lea Foods Co-operative

Judging Standard

- 20** General Appearance
- 40** Crust
- 40** Filling

Rules for 2024 Fairs & 2025 Convention

LIQUID HONEY COMPETITION

Pure, Ontario #1, White



Rules:

Please review the General Competition Rules document.

Exhibitors of honey must be registered beekeepers and the exhibits shown by them must be pure honey from floral sources in their apiaries.

Entry must be made solely by the person or family entering the competition. The entries at the fair level, district level and provincial level must be from the same batch.

District Competition

1. Liquid Honey exhibits shall consist of one (1) clear glass container, having a capacity of 500 grams (375 ml).
2. Each agricultural society is entitled to send their best of show to the district competition.
3. If the exhibitor has won at more than one fair, the one closest to the exhibitor's home address is the agricultural society from which the entry will be sent to the district competition. The other agricultural societies may send their second place winner into the district competition. An exhibitor may only enter into one district competition.
4. The OAAS will award a ribbon to exhibitors of winning entries at each district competition.

Provincial Competition

1. Liquid Honey exhibits shall consist of two clear glass containers, each having a capacity of 500 grams (375 ml).
2. Entries must be labelled on the **BOTTOM** of the containers only with a supplied entry number or identifier. No other labels will be permitted.
3. Any honey entry containing any form of foreign material will be disqualified from the competition.
4. Honey will be judged using the standards printed in the *OAAS Agriculture & Horticulture Judging Standards for Ontario Fairs*. An approved colorimeter will be used to assess the colour.
5. 1st and 2nd place entries will be placed up for auction at the convention.

Judging Standards

Appearance – 45 points	Clarity 45 points	Containers 10 points
15 Density (moisture content)	15 Free from crystals	5 Pleasant appearance, of equal size and shape
10 Brightness	15 Free from pollen, wax, etc.	
10 Flavour and aroma	15 Free from air bubbles, either in suspension or as froth	5 Uniform level of fill
5 Uniformity of honey		
5 Colour		

Provincial Prize Money – 1st - \$50.00, 2nd - \$30.00, 3rd - \$20.00

Sponsored by the Ontario Beekeepers' Association

MAPLE SYRUP COMPETITION

Pure Maple Syrup, Ontario Grade A – Amber.



Rules:

Please review the General Competition Rules document.

Entry must be made solely by the person or family entering the competition. The entries at the fair level, district level and provincial level must be from the same batch.

District Competition

Maple syrup exhibits shall consist of one (1) curved Kent style glass bottle (D&G #505188 Syrup Bottle with Handle), or equivalent, of Maple Syrup, Canada Grade A - Amber, having a capacity of 250 mL.

Each agricultural society is entitled to send their best of show to the district competition. If the exhibitor has won at more than one fair, the one closest to the exhibitor's home address is the agricultural society from which the entry will be sent to the district competition. The other agricultural societies may send their second place winner into the district competition. An exhibitor may only enter into one district competition.

The OAAS will award a ribbon to exhibitors of winning entries at each district competition.

Provincial Competition

Maple syrup exhibits shall consist of two (2) curved Kent style glass bottles (D&G #505188 Syrup Bottle with Handle), or equivalent, of Maple Syrup, Canada Grade A - Amber, each having a capacity of 250 mL.

Entries must be labelled on the BOTTOM of the containers only with a supplied entry number or identifier. No other labels will be permitted.

All maple syrup should have a flavour characteristic of its respective colour class and be free from any objectionable odour or taste. It is best to sample from the same lot before submitting your entries to the OAAS.

Any maple syrup entry containing any form of foreign material will be disqualified from the competition.

Maple syrup will be judged using the standards published by the OAAS in *Agriculture & Horticulture Judging Standards for Ontario Fairs*. An approved maple syrup colorimeter will be used to assess the colour.

1st and 2nd place entries will be placed up for auction at the convention. Other entries will be returned.

Judging Standards

40 points - Flavour

30 points - Density

20 points - Colour

10 points - Clarity

Provincial Prize Money – 1st - \$50.00, 2nd - \$30.00, 3rd - \$20.00

Rules for 2024 Fairs & 2025 Convention

PLANTS & CUT FLOWERS

Chairperson: Betty Bender, 291- 4603

Committee: Marlene McQuinn, Mary Kerr, Jan Chapman, Mary Foote, Pat Mayberry, Joyce Simpson, Carolyn Sturgeon, Paulette Coneybeare, Shelby Donegan

PLANTS & CUT FLOWERS RULES

1. Flowers in ALL classes must be HOME GROWN, established in suitable containers.
2. Any exhibit not worthy will not be awarded a prize.
3. At the discretion of the judge and the committee, a section may be subdivided.
4. Amateur exhibitors only! No entries from store owners, representatives, designers, professionals or anyone being paid for designing/growing plants.

****NEW CLASS FOR PROFESSIONALS ONLY****

HELPFUL HINTS FOR PREPARING MATERIALS

(Ontario Judging Standards for Horticultural & Floral Design)

1. Cut flowers and foliage the evening before the show or in the early morning.
2. Flowers stay fresher and show better if there are NO LEAVES in the container.
3. Make a fresh slanting cut at the end of stems, for maximum water intake.
4. Place in a wide bucket in deep *warm water*, preferably overnight.
5. Store in a dark, humid, draft-free place.
6. Some cut flowers, foliage and woody materials do not readily absorb water and require further treatment to prevent wilting. Woody branches may benefit from splitting cut ends and some need the thick outer layer removed as well. Some cut flowers (e.g., poppies) benefit from burning the stem ends while others benefit by placing stem ends in boiling water or from chemicals in the water. About 2 Tbsp. of glycerine in 4 L of water, or florist crystals may be beneficial. Details are also available in flower arranging books.
7. Removal of dust, stains, and any other foreign material from blooms and foliage enhances the exhibit.
8. Remove damaged foliage.
9. Re-cut stem ends before placing in show containers.

POTTED PLANTS

Note: ONLY THE PLANT LISTED should be in the container.

Pots/containers are considered in overall appearance.

Accessories are acceptable.

Prizes : 1st \$5.00 2nd \$4.00 3rd \$3.00

1. Shamrock plant
2. African Violet, SINGLE CROWN, any colour
3. Any kind of fern (asparagus fern is not a true fern)
4. Fibrous Begonia, any number/colour of plants growing in a container

5. Philodendron, not over 20 in. high including pot
6. Tuberous begonia, in bloom, in pot
7. Baby tears, small leaves
8. Unlisted houseplant in bloom
9. One or more varieties of succulent plants (includes cactus) in one container, not over 20 in. high including pot.
10. Any kind of ivy
11. Unlisted house plant UNDER 12" (NAMED)
12. Unlisted house plant OVER 12" (NAMED)
13. Any variety of orchid
14. Coleus plant collection growing in a container (1or more varieties)
15. Plant growing in a medium other than soil (e.g. air plant)

CUT FLOWERS

Note: All cut flowers should be shown with own foliage.

Support in suitable container. Floral oasis should not be used. Glass beads, pin or glass frogs are allowed for support.

Aim for uniformity in height, flowers and leaves.

~ Bloom: An individual flower, one to a stem. A bud is considered a bloom.

~ Stem, Stalk or Scape: A plant structure carrying one or more flowers and/or buds.

~ It may be branched e.g. sweet peas, iris

~ Spray: A portion of a plant with a number of flowers e.g. chrysanthemum, petunia, floribunda roses etc.

Prizes: 1st \$5.00 2nd \$4.00 3rd \$3.00

16. Hosta, 3 leaves each a different variety, 4" or less in width
17. Hosta, 3 leaves each a different variety, more than 4" in width
18. Perennials (unlisted), 3 stems one variety, OVER 15" high, including container, NAMED
19. Perennials (unlisted), 3 stems one variety, UNDER 15" high, including container, NAMED
20. Annuals (unlisted), 3 stems one variety, OVER 15" high, including container NAMED
21. Annuals (unlisted), 3 stems one variety, UNDER 15" high, including container NAMED
22. One variety of white daisies, 5 stems
23. One variety of double white daisies, 5 stems
24. One variety of daisies other than white, 5 stems
25. Calla Lily, 1 stem with leaf from same plant
26. Daylily, 1 scape (stem), orange blends with own foliage
27. Daylily, 1 scape(stem) any colour other than orange blends with own foliage
28. Bee Balm, 5 stems, red or pink
29. Bee Balm, 5 stems mauve or purple
30. Marigolds, French(small), 3 blooms with own foliage
31. Petunias, single, 1 SPRAY with own foliage

32. Hydrangea, one stem, white
33. Hydrangea, one stem, coloured
34. Tuberous Begonia, one bloom floating in an open bowl, NO foliage (must float and not touch sides of bowl)
35. Sweet Peas, best display
36. Pansies and/or viola with own foliage, best display
37. One flowering hosta stem with leaf from same plant
38. Rose, one bloom floating in an open bowl, NO foliage (must float and not touch sides of bowl)
39. Rose- Hybrid Tea, one stem in a vase with own foliage
40. One stem of a rose, any variety other than Hybrid Tea
41. Rose with best fragrance – one stem in a vase
42. Astilbe, three stems
43. Lilies, one stem, any shade of pink
44. Lilies, one stem, yellow or yellow blend
45. Lilies, one stem, white or white blend
46. Lilies, one stem, orange
47. Lilies, one stem, any colour not listed
48. Ornamental grass, five stems, same variety, under 30” including vase
49. One clematis bloom floating in a suitable container, NO foliage, (must float and not touch sides of container)

DESIGNS WITH PLANT MATERIAL

NOTE: A design is a combination of fresh and/or dried plant materials and/or inorganic objects arranged to produce an artistic unit.
(Floral oasis may be used)

Prizes: 1st \$10.00 2nd \$7.00 3rd \$5.00

50. “Going Forward with Local Food”- Ontario fresh fruits and/or vegetables featured in a design
51. “In the Right Direction” – any design not exceeding 12” in any direction
52. “Local Fields and Trails” - design using wayside plant material
53. “People Put Flowers in the Craziest Things”
54. “Solitaire”- design using one bloom
55. “Brighter Days Ahead”- design using only foliage in a variety of colours
56. “A Greener Future”- all green design
57. “Celebrate Canada”- design featuring red and white
58. “Hats off to Farming” - design in any type of hat
59. “Tiny Tim” - a miniature design not exceeding 5” any direction
60. “Every Farmer Needs a Break” - arrangement in a mug
61. “Once Around Your Own Back Yard” - a bouquet in a vase

PATIO PLANTERS AND HANGERS

Plants must be growing in containers.

Prizes: 1st \$ 7.00 2nd \$5.00 3rd \$4.00

62. Flowering hanging planter – Minimum size container 10 in.
63. Foliage hanging planter (no flowers) – Minimum size container 10 in.
64. Patio Container with mixed plants
65. “Succulents” (hens & chickens, cacti etc.) growing in a novel container with accessories
66. Pot of 2 or more growing herbs
67. Fairy Garden
68. Plants in a wicker basket
69. Any container filled with one or more colours of ONLY impatiens

SPECIALS

70. FAIR THEME SPECIAL – A design interpreting the theme “Farming Fast Forward”

- 1st - \$50 gift certificate from Fletcher’s Landscaping
2nd - \$25 gift certificate from Listowel Florist
3rd - \$25 gift certificate from Zehrs Food Plus, Listowel

71. MEMORIAL DESIGN – In memory of Marg Cleland, “Sunset Glory”
Sponsored by Pauline and Richard Boertien

1st - \$10 2nd - \$8.00 3rd - \$7.00

72. MEMORIAL DESIGN – In memory of Doris Van Camp, “Birds and the Bees”
Sponsored by James and Margaret Van Camp

1st-\$10.00 2nd-\$ 8.00 3rd - \$7.00

73. MEMORIAL - In memory of Verna Coneybeare, “Moving Forward” – design featuring a farm vehicle

Sponsored by James Coneybeare

1st- \$10.00 2nd - \$8.00 3rd - \$7.00

JUDGE’S CHOICE AWARD #1

MEMORIAL – In memory of Mac Thompson – \$25 Judges choice from entries in “Designs with Plant Material” - \$25

Sponsored by Phyllis Thompson

JUDGE’S CHOICE AWARD #2

\$25 Gift Certificate from “Victorian Inn & Spa on Main”

Judge’s choice from entries in “Potted Plants”

SPECIAL ACHIEVEMENT AWARD – For most points in Potted Plants and Cut Flowers

1st - \$50.00 gift certificate from Riverbend Gardens & Nursery

2nd - \$25.00 gift certificate from Zehrs Food Plus (Listowel)

SPECIAL ACHIEVEMENT AWARD – For most points in Floral Designs & Patio Planters & Hangers

1st - \$25.00 gift certificate from Listowel Greenhouses

2nd - \$25.00 gift certificate from Watson's Home Hardware, Listowel

****NEW CLASS - PROFESSIONALS ONLY****

DESIGN WILL NOT BE JUDGED, BUT WILL BE DISPLAYED. PLEASE INCLUDE YOUR NAME AND NAME OF BUSINESS.

PLANT MATERIAL MAY BE PURCHASED.

A design demonstrating your interpretation of the theme “Farming Fast Forward”

*Thank you to all of our sponsors of Special Classes!
We also appreciate the additional donation of prize money from
Watson's Home Hardware, Listowel towards the
Plants and Cut Flowers Competition.*

SEWING & NEEDLEWORK

Chairperson: Nora Verkley 519-356-2527

Committee: Pat Hogerwaard, Marion Knoblauch,
Bonna May, Kathy McMillan, Donna Mitchell,
Eleanor Petrie, Linda Robertson

PLEASE NOTE

Only one article per person in each class.

Entries must be the work of the exhibitor.

New, up-to-date articles will be given preference.

*Judges have been authorized to disqualify all soiled
or old work.*

*Please place completed fair tag with a safety pin to the
top left corner of item before entering it in the Fair.*

Please cover labels on the back of the item.



SEWING AND NEEDLEWORK

PRIZES: 1st \$8.00; 2nd \$6.00; 3rd \$4.00

1. Fair theme item
2. Sewing tote
3. Pet accessories - any medium
4. Cosmetic Bag
5. Child's Hallowe'en Bag
6. Counted cross stitch
7. Snuggle blanket
8. Christmas table runner
9. Cloth handbag or backpack
10. Tactile sensory, memory quilt, small lap quilt size (no removable objects). This item will be judged and donated to a local Alzheimer Society
11. Embroidered article - judged on embroidery workmanship
12. Sewn home décor item, under 36"
13. Felted wool application
14. Apron
15. A sewn item using geometric design
16. Sleep pants
17. An item of child clothing
18. Fibre art article using modern techniques
19. Vest or jacket, any medium
20. Placemats - using three fabrics
21. Shopping bag - multi use
22. Decorated Pin Cushion
23. Doll Quilt and Matching Pillow
24. Microwave bowl holder
25. Needlework project not previously listed
26. Spring placemats
27. Wallhanging depicting snowman
28. Sewn item celebrating Canada Day
29. Christmas fabric centerpiece
30. Hallowe'en sewn item
31. Autumn table runner



KNITTED SECTION

32. Child Hat
33. Adult Hat
34. Patterned socks
35. Poncho or Wrap
36. Adult slippers
37. Mittens
38. Scarf - knit with yarn
39. Child sweater
40. Adult sweater



CROCHET SECTION

41. Animal toy
42. Child hat
43. Adult hat
44. Poncho or Wrap
45. Slippers
46. Youth/adult sweater or cardigan
47. Graphghan

SENIOR CITIZEN ~ over 60

48. Knitted or Crocheted Scarf
49. Crib quilt
50. Quilt - Lap or larger
51. Knit socks with cabled detail
52. Counted cross stitch or embroidery item, framed

YOUTH CORNER **No entry fee

53. Knit or Crochet Item
54. Any sewn item

QUILTING

Chairperson: Nora Verkley 519-356-2527

Committee: Pat Hogerwaard, Marion Knoblauch, Bonna May, Kathy McMillan, Donna Mitchell, Eleanor Petrie, Linda Robertson

NOTE: This Section requires a separate entry form.

PLEASE NOTE

Only one article per person in each class.

Entries must be the work of the exhibitor.

New, up-to-date articles will be given preference. Judges have been authorized to disqualify all soiled

or old work.

Please place completed fair tag with a safety pin to the top left corner of item before entering it in the Fair.

Please cover labels on the back of the item.

PRIZES: 1st \$8.00; 2nd \$6.00; 3rd \$4.00

LONG ARM SECTION A

Item created by Exhibitor and Quilted by Exhibitor

1. Quilt - machine or hand applied and/or embroidered, minimum 324"
2. Quilt - minimum 324"
3. Lap quilt - maximum 324"
4. Baby/Child quilt
5. Abstract quilt, minimum 324"
6. Quilt showcasing edge to edge quilting
7. Christmas quilt any size
8. Table Runner
9. Wall Hanging



LONG ARM SECTION B

Item created by Exhibitor and Quilted by Another (Longarm) - Recognize Quilter on Entry Tag
Judging based on creation of quilt

10. Quilt - machine or hand applied or embroidered, minimum 324"
11. Quilt - minimum 324"
12. Lap quilt - maximum 324"
13. Baby/Child quilt
14. Abstract quilt, minimum 324"
15. Quilt showcasing edge to edge pantograph
16. Christmas quilt any size
17. Table Runner
18. Wall Hanging

DOMESTIC MACHINE SECTION C

Item created by Exhibitor and Quilted by Exhibitor

19. Quilt - machine or hand applied and/or embroidered, minimum 324"
20. Quilt - pieced quilt any size
21. Lap quilt
22. Baby/Child quilt
23. Abstract quilt
24. Quilt showcasing a linear edge to edge
25. Quilt as you go quilt
26. Table runner
27. Wall Hanging

HANDQUILTING SECTION D

28. Quilt created by hand or embroidered, minimum 324"
29. Quilt - minimum 324"
30. Lap quilt - maximum 324"
31. Baby/Child quilt
32. Abstract quilt, minimum 324"
33. Quilt created by exhibitor and hand quilted by another
34. Big Stitch quilting on any size quilt
35. Table Runner
36. Wall Hanging

ASSORTED QUILTS

37. Quilt/panel, any size
38. Paper pieced quilt
39. Quilt, machine quilted any technique by two or more people
40. Quilt, any size, any other technique not listed
41. Bargello item
42. Quilt completed by an organization or group

QUILTING SPECIALS

\$20.00 EACH FOR BEST IN CLASS

*Quilt, pieced and long arm or domestic machine quilted by exhibitor, minimum 324" (Sections A#1, A#2, C#19, C#19)

*Quilt, pieced by exhibitor and long arm quilted by another, Long Arm quilter recognized on entry tag (Sections B#10, B#11, B#14)

*Quilt hand quilted, minimum 324" (Sections D#28, D#29)

*Quilt Completed by an Organization or a Group

*Committee Special (Section C)

Memorial - In memory of Verna Coneybeare

* Baby/Child Quilt (Sections A#4, B#13, C#22, D#31)

BEST OF SHOW - SPECIAL GIFT CERTIFICATE

Sponsored by Country Quilting, Pam McLellan

Special thanks to our sponsors:

E&E Cloth and Creations, Newton
Pins & Needles, 177 Main St. W., Listowel

Country Quilting, Pam McLellan,
84849 Ethel Line, Brussels

The Quilt Jeannie, Harriston

HAND QUILTED QUILT COMPETITION



Rules:

1. Please review the General Competition Rules document.
2. The quilt must be solely made, and hand quilted by the exhibitor and exhibited and judged at a local Ontario Association of Agricultural Societies (OAAS) fair to be eligible for this competition.
3. Quilts to be measured on the perimeter. Total perimeter measurement to be a minimum of 324 inches. Note the quilt can be square, rectangular etc. All 4 sides must be measured to determine the perimeter measurement.
4. The quilting must be through all 3 layers (top, batting and back) and not be mounted on a frame. The quilt may have a sleeve attached to the back for the purpose of hanging the quilt.
5. The winning OAAS Hand Quilt will not be eligible to compete in any future OAAS fair, district and/or provincial competitions.
6. It is the exhibitor's responsibility to give credit to the original designer of the quilt pattern based on copyright rules.

District Competition

7. Each local fair is entitled to send their best of show of all eligible hand quilts to the district competition.
8. If the fair's best of show hand quilt has won at more than one fair, the exhibitor must consider their own agricultural society as the one from which the quilt will be sent to the district meeting, otherwise it should be sent from the agricultural society nearest his/her home address. The other fairs at which this quilt was entered and won, may enter their second best of show hand quilt into the district competition.
9. An exhibitor who wins more than one best of show title with different hand quilts at different fairs is entitled to enter each winning quilt in the district competition.
10. If an exhibitor is exhibiting in more than one district, they are entitled to enter different winning quilts at different district competitions but cannot enter the same quilt at more than one district competition.
11. The OAAS will award a ribbon to exhibitors of winning hand quilts at each district competition.
12. A photo of the top three placed hand quilts at the district competition must accompany the "OAAS Championship Quilt Entry Form"

Provincial Competition

13. A \$500.00 GRAND PRIZE and rosette will be awarded. The exhibitor will retain ownership of the quilt.
14. A \$100 RESERVE GRAND PRIZE will be awarded. The exhibitor will retain ownership of the quilt.

Judging Standards

- | | |
|----|-----------------------------|
| 25 | General Appearance & Design |
| 20 | Colour & Materials |
| 55 | Workmanship |
| 30 | Quilting |
| 10 | Borders |
| 15 | Binding and Picots |

MACHINE QUILTED COMPETITION



Rules:

1. Please review the General Competition Rules document.
2. The quilt must be solely made, and machine quilted by the exhibitor and exhibited and judged at a local Ontario Association of Agricultural Societies (OAAS) fair to be eligible for this competition.
3. Quilts to be measured on the perimeter. Total perimeter measurement to be a minimum of 324 inches. Note the quilt can be square, rectangular etc. All 4 sides must be measured to determine the perimeter measurement.
4. The quilting must be through all 3 layers (top, batting and back) and not be mounted on a frame. The quilt may have a sleeve attached to the back for the purpose of hanging the quilt.
5. The winning OAAS Machine Quilt will not be eligible to compete in any future OAAS fair, district and/or provincial competitions.
6. It is the exhibitor's responsibility to give credit to the original designer of the quilt pattern based on copyright rules.
7. The use of domestic, mid arm and/or long arm equipment is permitted on hand or computer guided machine quilt entries.

District Competition

1. Each local fair is entitled to send their best of show of all eligible machine quilts to the district competition.
2. If the fair's best of show machine quilt classes has won at more than one fair, the exhibitor must consider their own agricultural society as the one from which the quilt will be sent to the district meeting, otherwise it should be sent from the agricultural society nearest his/her home address. The other fairs at which this quilt was entered and won, may enter their second best of show machine quilt in the district competition.
3. An exhibitor who wins more than one best of show title with different machine quilts at different fairs is entitled to enter each winning quilt in the district competition.
4. If an exhibitor is exhibiting in more than one district, they are entitled to enter different winning quilts at different district competitions but cannot enter the same quilt at more than one district competition.
5. The OAAS will award a ribbon to exhibitors of winning machine quilts at each district competition.
6. A photo of the top three placed machine quilts at the district competition must accompany the "OAAS Championship Quilt Entry Form"

Provincial Competition

7. All quilts entered in the competition must be machine quilted.
8. A \$500.00 GRAND PRIZE and rosette will be awarded. The exhibitor will retain ownership of the quilt.
9. A \$100 RESERVE GRAND PRIZE will be awarded. The exhibitor will retain ownership of the quilt.

Judging Standards

- | | |
|----|-----------------------------|
| 25 | General Appearance & Design |
| 20 | Colour & Materials |
| 55 | Workmanship |
| 30 | Quilting |
| 10 | Borders |
| 15 | Binding and Picots |

VIRTUAL**PHOTOGRAPHY COMPETITION**

Chairperson: Tracey Fitton ©519-292-6112 Tracey-Tracey@hotmail.com

Prize Money: 1st - \$5; 2nd - \$4; 3rd - \$3

Photography entries will be accepted online starting June 1st!

To enter visit: <https://www.assistexpo.ca/listowel-agricultural-society>

Details for entering online appear at the beginning of the Advanced Prize List.

The chairperson will be happy to help you if you need assistance with entering your photos online.

Amateur Photography Rules:

1. Submit ORIGINAL digital photo in preferably jpg, jpeg, png or tiff image format.
2. Amateurs only, no professionals.
3. One image per person per category, unless otherwise specified.
4. Photograph by exhibitor only, taken within the last 2 years (unless specified), and only exhibited for 1 year.
5. Photographs not suitable for family viewing will not be judged or displayed.
6. Committee decisions are FINAL. Disqualified entries in open classes will not be displayed.
7. Photos will be judged on quality, clarity, originality and composition.
8. Photos will be put into a video to be shown during the duration of the fair and on social media and housed on the Listowel Fair YouTube channel.
9. Entrants agree to have their work displayed virtually and name in the local media.z+

OPEN TO ALL AGES – ONE PRINT ONLY

1. Listowel Fair 2023	12. Summer Scenery	23. Coffee (be creative!)
2. New Life	13. Fall Beauty	24. Children with Animals
3. Vintage	14. Winter Wonderland	25. Illuminated At Night
4. Group of People	15. Old Building	26. Colours in the Sky
5. Feathered Friends	16. Place of Worship	27. Dominant Colour
6. Cloud Formations	17. Farm Technology	28. Sign
7. Laying Around	18. Field Crops	29. Tattoo
8. Reflections	19. Photobomb	30. Multicultural Food
9. Young Farmer(s) In Training	20. Lanes, Paths or Trails	31. Fancy Food Plating
10. Christmas	21. Chef's Creations	32. Cultural Diversity within Canada
11. Spring Flowers	22. Garden / House Plants	33. World Travel

OPEN TO ALL AGES – TWO PRINTS

34. Canada	39. Things with Wings
35. Black & White ~ Photographers Choice	40. Things with Tails
36. Zoom In / Zoom Out	41. Child / Children Playing Outdoors
37. Beginning and End	42. Agriculture
38. Same Picture, Different Seasons	43. Tractors and/or Farm Equipment

Special

Prize Money: 1st - \$10; 2nd - \$7; 3rd - \$5

44. Farming Fast Forward

SCRAPBOOKING & CARDMAKING

Co-Chairs: Alana McEachern 519-291-3993, thescrapbookshopca@gmail.com
Anne Laidlaw, 519-492-0356, mynameisannelaidlaw@yahoo.ca

SCRAPBOOKING & CARD MAKING RULES:

1. No kits or computer generated scrapbook pages or cards accepted, unless requested.
2. All scrapbook pages **MUST** be mounted on a single page, except in 2 pg layout categories. (No pocket-pages.)
3. Scrapbook pages must be 12"x12" and **MUST** be in protective sleeves.
4. Please do not send envelopes with the cards, unless requested.
5. Card Collections must come mounted on Black Bristol Board or Cardstock from exhibitor.
6. One entry per person, per category.
7. Amateurs can **ONLY** enter in the open and youth classes.
8. Professionals category is for storeowners, representatives, designers and professionals **ONLY**.
9. Committee decisions are final. Disqualified entries in open and professional classes will not be displayed.

SCRAPBOOKING

ONE PAGE LAYOUT (open to all ages)	TWO PAGE LAYOUT (open to all ages) *must be taped or attached together*	Youth Scrapbooking – Ages 15 & under	Professionals Only
1. Fair Theme	8. Easter/Spring Holiday	15. CANDY!	19. My Pet
2. Wedding/Celebration	9. Young Farmer	16. Fair Theme	20. Dominant Colour
3. Vintage	10. Dominant Colour	17. My Pet	21. Holiday Theme (Two-Page Layout)
4. Not in my backyard	11. Special Occasion	18. Any other topic	22. An item of Art Journaling
5. Group of People	12. Halloween		
6. Agriculture	13. Christmas/Winter holiday		
7. Food & Drink	14. Garden Beds		

CARD MAKING

Open Cardmaking	Youth Cardmaking – Ages 15 & under	Professionals Only
1. Gnome theme Card	10. Birthday Card	14. Christmas Card
2. Christmas Card	11. Christmas Card	15. Birthday Card
3. Card using a die cut	12. Card for my teacher	16. Fair Themed Card
4. Fun Fold Card	13. Fair themed Card	17. Card using stamps and/or die pieces
5. Birthday Card		
6. Fair Themed Card		
7. Card with quilling		
8. Humorous Card		
9. Card using an unusual item		

Prize Money: 1st - \$5; 2nd - \$4; 3rd - \$3



4-H Competition!



Open to current 4-H members only.

**Win prize money to help pay for your 2025 4-H membership fee!
No entry fee! 1st \$5; 2nd \$4, 3rd \$3**

Competitors are to use their Listowel Fair competitor number.

If the 4-H member is new to exhibiting in the Agricultural Hall, a number will be assigned at registration.

Please present 4-H membership card at registration.

Classes 1-6 are open to all 4-H members. Classes 7-10 are open to all Cloverbud participants only.

A member does not necessarily have to have participated in a project on the topic in each category to be eligible to compete.

Only one entry per 4-H member per class allowed.

Please specify age of competitor on entry tag. If a class has more than six entries, the class will be divided into Junior (9-13 yrs. old) and Intermediate/Senior (14-21 yrs. old)

Entries will be accepted on Tuesday, July 11th (7pm-9pm) or Wednesday, July 12th (8am-11am). Judging will take place Wednesday, July 12th from 12:30pm to 5pm. During this time, the Agricultural Hall will be closed to the public. ***Your prize money will be mailed to you in August.***

Any questions? E-mail: listowelfair@gmail.com

Contact Leasa Skinner, 519-807-8306, leasaskinner@gmail.com

Elizabeth Johnston, 519-291-0644 or Tracey Fitton, 519-292-6112

1. Any knitted or crocheted article
2. Any sewing project
3. Any craft completed in a 4-H club
4. A photo showing any aspect of 4-H, taken by the member or a photo of you participating.
5. Your favourite dessert from a 4-H manual – please include recipe
6. Any 4-H project not listed above.

Cloverbud 4-H Competition!

Open to current 4-H Cloverbud participants only (6-8 years old)

7. Colour a picture from Year Three of the Cloverbud Manual.
8. Create a centre piece for a party.
9. Using recycled materials, create a bird feeder
10. Any Cloverbud project not listed.

2024 Listowel Fair – Advanced Prize List

Fine Arts

NOTE: All items exhibited in Fine Arts must be listed on a separate entry form and brought to the Fine Arts area upon drop off. Any items not listed or not delivered by judging time may be disqualified.

Committee Contact: Kathy Halliday (519-591-0568; kdhalliday33@gmail.com)

Prize Money 1st - \$5; 2nd - \$4; 3rd - \$3

Preschool

1. Find and colour a picture of a truck
2. Make a paper plate farm animal
3. Make a happy face cookie (Baked by parent/guardian; decorated by child using edible decorations.)
4. Use an egg carton and other craft materials to make a bug

Junior/Senior Kindergarten (** please indicate JK or SK on entry tag **)

5. Finger Painting – Use a half sheet of Bristol board for your masterpiece
6. Create an animal using at least one empty toilet paper roll
7. Print 'Farming' on a 5"x7" piece of lined paper
8. Make a collage of farming related pictures on an 8 ½"x11" piece of white paper

Grade 1 & 2 (** please indicate grade 1 or grade 2 on entry tag **)

9. Decorate a pair of Crocs (or similar) to wear to a party or special celebration
10. Create a farm vehicle using at least one empty toilet paper roll
11. Print the words 'Farming Fast Forward', five (5) times on a lined sheet of 8 ½" x 11" paper
12. Draw and label an invention of something you think we'll have in the future

Grade 3 & 4

13. Paint three (3) rocks (not to exceed 2"x2" each) to look like animals
14. Decorate five (5) wooden clothespins to look like animals
15. Write a 90-100 word story about your favourite relative and include a photo
16. Bouquet of flowers and weeds in your favourite mug

Grade 5 & 6

17. Make a stamp using a potato. Use different paint colours to stamp your design on an 8 ½"x11" piece of paper. (Submit both the potato stamp and the paper for judging.)
18. Make a bird feeder using a 2L milk carton
19. Arrangement of flowers and weeds in a rubber boot
20. Write three (3) paragraphs about what you think you'll be doing in 20 years.

Grade 7 & 8

21. Print a world map on an 8 ½"x11" piece of paper. Colour the map. Label 10 countries.
22. Homemade brownies (6), ready to gift to a friend or neighbour. (Please include the recipe, handwritten.)
23. A picture made using dried beans, seeds, etc. (Picture on an 8 ½"x11" piece of paper and then mounted on Bristol board.)
24. Write a letter to the Mayor to suggest something that could be done to help our community

Amateur Artists

25. Pencil sketch. Scene of your choice on an 8 ½"x11" piece of white paper.
26. Colouring – Picture of choice. Theme: Farming
27. Painting on canvas. Scene of your choice.
28. Mirror/Reflection Drawing. Scene of your choice on an 8 ½"x11" piece of white paper, mounted on black Bristol board.
29. Paint by Number

Handicrafts

30. An article of macramé
31. Pebble art
32. Handmade wedding favour
33. Mini wooden barn quilt (12"x12")
34. Handmade keychain
35. Suncatcher
36. Diamond Art
37. Article made of barn board
38. A Gnome – using materials of your choice.
39. Door Décor – Wreath or Door Swag – any medium or theme
40. Handmade Candle

Antiques – prior to 1960 (** please include a short story about your entry **)

41. A sewing pattern
42. A wedding picture
43. A Christmas ornament
44. A licence plate

Retro – 1960 – 1980 (** please include a short story about your entry **)

45. A cell phone
46. A Care Bear
47. A Barbie
48. A vinyl record
49. A Troll Doll
50. A Walkman

Senior Citizens (Open to ladies and gentlemen 60 years of age and over. Preference given to new work.)

51. Penmanship – A poem of your choice, 20 lines or more.
52. Any article of embroidery
53. A new item made from something old
54. Any article of woodworking
55. A quilted table runner
56. Knitted slippers
57. 'Nuts and Bolts' snack in a giftable container (Please include recipe.)
58. A handmade Christmas ornament (any medium)

Listowel Fair School Work Competition!



Contact Person: Elizabeth Johnston 291-0644; listowelfair@gmail.com;

Committee: Carolyn van der Heiden, Tracey Fitton, Marybelle Dittmer, Nancy Schildroth, Alana McEachern

Prize Money for all classes: 1st, \$3; 2nd, \$2; 3rd, \$1; Except murals; 1st, \$10; 2nd, \$8; 3rd, \$6.

School work will be picked up from the schools by Monday, June 24, 2024 and will be judged on Tuesday, July 2, 2024. Home-school entries are welcome! Listowel Fair will make every effort to display all entries; however, if display area is limited, only prize-winning entries will be displayed.

Name of school must appear on entry tag.

Special: The school with the most prize-winning entries will receive \$100!

Daycare & Nursery School

Class AD

Make a paper bag puppet that looks like a farm animal. Colour and decorate the puppet using a variety of craft supplies.

Class DD

Colour the picture provided labeled for Class DD. Please include the age of the child on the back of the picture.

Class E1

On large mural paper write the words '**Farming Fast Forward**' (the theme of the 2024 Listowel Fair) with the mural showing the various types of technology that are used in farming that help to feed the world (e.g. robots, drones, computers). Have the students decorate the mural using different materials, patterns and designs to depict the theme. Mural to be a maximum of 10 feet long. One entry per class allowed.

Junior Kindergarten



Class AJK

Using a small (6 or 7 inch) paper plate, create a barnyard animal. Colour, paint or decorate the animal using a variety of craft supplies.

Class BJK

Print your first name on a blank 5"X7" paper.

Class CJK Draw a picture of a crop that is grown in this area and label, in French, the name of the crop using an 8 1/2" x 11" piece of paper.

Class DJK

Colour the picture provided labeled for Class DJK.

Senior Kindergarten

Class ASK

Using old magazines, cut out and create a collage of tractors and farm equipment on an 8 1/2" x 11" sheet of paper.

Class BSK

Print your school's name on a blank 5"X7" paper

Class CSK Draw a picture of a crop that is grown in this area and label, in French, the name of the crop using an 8 1/2" x 11" piece of paper.

Class DSK

Colour the picture provided labeled for Class DSK.



Class E2 (JK & SK)

On large mural paper write the words '**Farming Fast Forward**' (the theme of the 2024 Listowel Fair) with the mural showing the various types of technology that are used in farming that help to feed the world (e.g. robots, drones, computers). Have the students decorate the mural using different materials, patterns and designs to depict the theme. Mural to be a maximum of 10 feet long. One entry per class allowed.

Grade One

Class A1

Using paper no larger than 8 1/2" x 11", create a "shape outline of a vehicle" using geometric shapes, mounted on black construction paper.



Class B1 Print the following poem on lined paper.

The Seed

*Plant me in the earth
Give me water each day
I'll grow to be a crop
While you play*

Class C1 Draw and label, in French, two crops that are grown in this area, using an 8 1/2" x 11" piece of paper.

Class D1 Colour the picture provided labeled for Class D1.

Class E3 (Grades 1 & 2)

On large mural paper write the words 'Farming Fast Forward' (the theme of the 2024 Listowel Fair) with the mural showing the various types of technology that are used in farming that help to feed the world (e.g. robots, drones, computers). Have the students decorate the mural using different materials, patterns and designs to depict the theme. Mural to be a maximum of 10 feet long. One entry per class allowed.



Class B9 (OPEN TO ANY GRADE): Cursive writing.

Entrants can write out any existing poem on lined paper. Poem to be 16 to 24 lines long and should be related to the theme of the fair. Topics can focus on anything related to the technology used in farming, food grown in this area or agricultural fairs. Use your imagination!

Grade Two



Class A2

Using two small (6 or 7 inch) paper plates, create a unique fish. Colour, cut, paint, glue and decorate the fish using a variety of craft supplies, keeping in mind that glitter and heavier items may not stay on when the fish are being transported. A maximum of 2 paper plates may be used to complete this task.

Class B2 Print the following poem on lined paper.

The Giving Farm

*Hens give eggs.
Pigs give ham.
Cows give milk.
Strawberries give jam.
Bees give honey.
Goats give cheese.
Farms give food.
I'd like some please.*

By Vicki Witcher

Class C2 Draw and label, in French, two crops that are grown in this area, using an 8 1/2" x 11" piece of paper.

Class D2 Colour the picture provided labeled for Class D2.

Class E3 (Grades 1 & 2)

On large mural paper write the words 'Farming Fast Forward' (the theme of the 2024 Listowel Fair) with the mural showing the various types of technology that help to feed the world (e.g. robots, drones, computers). Have the students decorate the mural using different materials, patterns and designs to depict the theme. Mural to be a maximum of 10 feet long. One entry per class allowed.



Grade Three

Class A3

Create a paper mosaic initial. Using their first initial, have students use carefully sliced complimentary colours. Creations may be mounted on any colour of paper. Maximum size of paper to be 8 1/2" x 11".



Class B3 Print the following poem on lined paper.

The Farm

*I see bunnies hopping
I hear birds chirping in the trees
I smell alfalfa growing in the field
I taste vegetables growing in the garden
I see cattle in the field eating grass
The barns for the cattle, pigs, chickens,
goats and sheep stand stately
I see the farm tractor working in the field
I watch the farmer as he grows our food
This food will feed the world including
you and I*

Class C3 Draw and label, in French, three crops that are grown in this area, using an 8 1/2" x 11" piece of paper.

Class D3 Create your initial out of cardboard, Bristol board or cardstock. Size is to be approximately 8 1/2" x 11". Decorate with craft supplies. Be creative!



Class E4 (Grades 3 & 4)

On large mural paper write the words 'Farming Fast Forward' (the theme of the 2024 Listowel Fair) with the mural showing the various crops grown and livestock raised in this area that help to feed the world. Have the students decorate the mural using different materials, patterns and designs to depict the theme. Mural to be a maximum of 10 feet long. One entry per class allowed.

Grade Four

Class A4

Using the template provided labeled Class A4, create a 'My Emotions Wheel.'



Class B4

Print the following poem on lined paper.

Our Farmers, Our Future

*Farmers are important,
They're working all day long.
Every Canadian will go hungry,
If something does go wrong.*

*Farmers grow our fruit and veg,
Raise sheep and cattle too.
A farmer's life is hard,
There's a lot of work to do.*

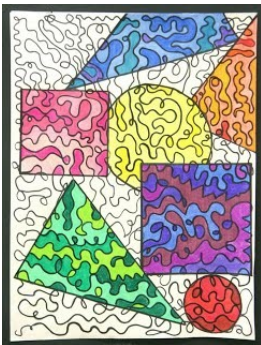
*When harvest time comes
And the crops are ripe and ready,
The farmer picks and sells his crops,
Keeping the supply full and steady.*

*Our farmers are our future,
Without them there is no hope.
So let's appreciate them,
And how they help us cope.*

By Erica Graham

Class C4

Using an 8 1/2" x 11" piece of paper, draw and colour "Un jardin potager" (A vegetable garden) title and label four items in French.



Class D4

Create a one line continuous art project. Use at least four different polygons (e.g. triangle, rectangle, square, hexagon, circle, etc.) in your design.

Class E4 (Grades 3 & 4)

On large mural paper write the words 'Farming Fast Forward' (the theme of the 2024 Listowel Fair) with the mural showing the various types of technology that are used in farming that help to feed the world (e.g. robots, drones, computers). Have the students decorate the mural using different materials, patterns and designs to depict the theme. Mural to be a maximum of 10 feet long. One entry per class allowed.

Class B9 (OPEN TO ANY GRADE):

Cursive writing. Entrants can write out any existing poem on lined paper. Poem to be 16 to 24 lines long and should be related to the theme of the fair. Topics can focus on anything related to the technology used in farming, food grown in this area or agricultural fairs. Use your imagination!

Grade Five

Class A5

In 50 words or less, name your favourite food and list all of the ingredients that a farmer would have to grow for you to make your favourite food. Print on an 8 1/2" X 11" piece of lined paper. Use illustrations if desired.

Class B5 Print the following poem on lined paper.

Farming Technology

*Farming has been around
Ever since time began
The technique has been remarkable
Different methods to work the land*

*We have come a very long way
From the horse and plows, you know
Changing slowly through the years
Modern pictures sure make it so*

*They were designed to take a swath
Wide and smooth and clean
From a field that goes for miles
As far as the eye has seen*

*Don't you think they're beautiful?
These modern day tractors and such
Astonishing their sizes are
They have that 'farming' touch
But I suppose new technology
Has to grow as time moves on
Because of the enormous population
The horse and plow couldn't last for long!*

By Marilyn Lott

Class C5 Using an 8 1/2" x 11" piece of paper, Draw and colour "Le machines de la ferme" (machines on the farm) title and label five items in French.

Class D5 Create a self identity through tracing.

Using 11" x 17" paper, have students trace both their feet and hands on the page. Have them make a self portrait, creating the remaining body and facial expressions.



Grade Six

Class A6

Choose a seed and glue it on a piece of paper. Draw the root system and the plant that will grow from this seed. Label what type of seed it is. Create on 8 1/2" x 11" paper.

Class B6 Print the following poem on lined paper.

Golden Wheat Fields

*Driving down that red dirt road
I take a deep gulp of air
Ah yes, I love those wheat fields
Any worries will quickly repair*

*Huge machines ready to work
And to reap that golden land
The crops are ripe and ready to cut
With the massive combine head*

*Workers sweat and toil in the sun
From early morning till dark
Then up again when the dew is gone
They have that farmer's spark*

*The bales are huge and round
All rolled with an impressive machine
Just the way they like them
Yep, those bales are a farmer's dream*

*If you ever get a chance
Watch those people as they work
All things will come into balance
As they labour in that dirt!*

Class C6 Using a 8 1/2" x 11" piece of paper, create a drawing that looks like a picture taken by a drone in the sky looking down on a farm. Label, in French, at least five things the drone saw on the ground.

Class D6

Create an inspirational hand doodle. Have students trace their hand and then add lines and motivational messages, words of motivation or simply the Character Attributes throughout. The attributes can be found at: <http://www.northperthcoc.com/attributes.html>



Class E5 (Grades 5 & 6)

On large mural paper write the words 'Farming Fast Forward' (the theme of the 2024 Listowel Fair) with the mural showing the various types of technology that are used in farming that help to feed the world (e.g. robots, drones, computers). Have the students decorate the mural using different materials, patterns and designs to depict the theme. Mural to be a maximum of 10 feet long. One entry per class allowed.

Class B9 (OPEN TO ANY GRADE): Cursive writing. Entrants can write out any existing poem on lined paper. Poem to be 16 to 24 lines long and should be related to the theme of the fair. Topics can focus on anything related to the technology used in farming, food grown in this area or agricultural fairs. Use your imagination!

Grade Seven

Class A7

Cut a photo in half. Glue one side onto an 8 1/2" x 11" page and then draw and colour the other half to complete the whole picture.

Class B7 Print the following poem on lined paper.

Dedicated to the Farmers of the World

*This poem is dedicated to the farmers of the world,
Who have worked hard to focus their energy that swirled,
To supply us with food through hard work and dedication,
For without their effort most would die of starvation,*

*An ancient art of farming dates back to prehistoric times,
That has developed even further over many lifetimes,
Farming has built the foundation of every civilization,
For without farming there could not be a single nation,*

*Raising crops, poultry, and livestock is not an easy task,
Working for hours under the scorching sun these farmers bask,
Raising orchards and vineyards with the resources at hand,
Using skills and technology to enhance their own farmland,*

*These hard working agriculturers should be given more appreciation,
Because without them we could not have evolved into a nation,
They keep civilization in existence, they enable us to survive,
Without farmers, most of us would not be alive!*

By Daya Nandan

Class C7 Using a 8 1/2" x 11" piece of paper, create an artistic display using one of the French interjections below:

- * Attention!
- * Silence!
- * Brrr!
- * Bravo!
- * D'accord!
- * or one of your own choosing

Entry must be hand drawn.



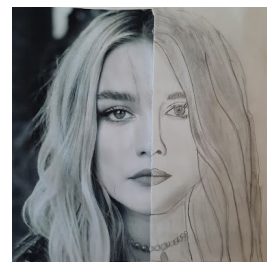
Class D7 Using the word "Google", create a google doodle on an 8 1/2" x 11" paper. Entry must be hand drawn.



Grade Eight

Class A8

Create a split picture by cutting a 5" x 7" photo of yourself in half and then recreate the missing half. The completed picture should be mounted on 8 1/2" x 11" paper (Bristol board, cardstock or construction paper). Picture used can be a photocopy.



Class B8 Print the following poem on lined paper.

Harvest Celebration

*Completion of the harvest, is a time to celebrate,
Leaves on trees are yellowing, around the whole estate,
Barns and bins are full to bursting, for winter now is here,
In olden days it was the same, to grow still takes a year.*

*A lot more hand work then, more men worked upon the land,
Ploughed with horses an acre a day, seed was sown by hand,
Good rotation of all the crops, kept most weeds at bay,
At harvest stood sheaves up in stooks, for two church bells they must stay.*

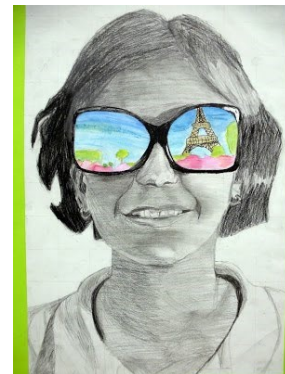
*Into bays or ricks were built, threshed out as needed through the year,
Wheat went to the mill to be ground, flour for bread we do revere,
Oats to feed the cattle and horses, and some for porridge bound,
To feed the men and families who, work on the land all year round.*

*Mechanized now and fewer people, but crops still grow the same,
Sunshine and warmth in the spring, showers to grow good crops the aim,
In nature nothing really changes, seasons come and go,
To keep us on the land we all love, its food for everyone we grow.*



Class C8 Using a 8 1/2" x 11" piece of paper, create a poster/ad "en Francais" promoting the Listowel Fair, highlighting the many events that take place throughout the weekend.

Class D8 Create a shades of summer poster. Draw a "selfie" with sunglasses projecting the thing you're most looking forward to in summer. Create your poster on paper no larger than 11" x 17".



Class E6 (Grades 7 & 8)

On large mural paper write the words 'Farming Fast Forward' (the theme of the 2024 Listowel Fair) with the mural showing the various types of technology that are used in farming that help to feed the world (e.g. robots, drones, computers). Have the students decorate the mural using different materials, patterns and designs to depict the theme. Mural to be a maximum of 10 feet long. One entry per class allowed.



AGRICULTURAL SOCIETY

Farm Safety Youth Competition!

Contact Person: Elizabeth Johnston 291-0644; listowelfair@gmail.com;

Committee: Carolyn van der Heiden, Tracey Fitton, Marybelle Dittmer, Nancy Schildroth

Prize money will be provided by the Listowel Agricultural Society.

1st - \$5; 2nd - \$3; 3rd - \$2

School work will be picked up from the schools by Monday, June 24, 2024 and will be judged on Tuesday, July 2, 2024. Home-school entries welcome! Listowel Fair will make every effort to display all entries; however, if display area is limited, only prize-winning entries will be displayed.

Name of school must appear on entry tag.

Class F: Farm Safety

Class FSJK (Junior Kindergarten):

Colour the picture of the cat provided, labeled Class FSJK. Trace the word cat at the top of the page.

Class FSSK (Senior Kindergarten):

Colour the picture of the dog provided, labeled Class FSSK. Print the word 'dog' on the line at the top of the page.



Class FS1 (Gr. 1) Animal Safety:

Connect the dots and colour the animal on the page labeled Class FS1. Print, in your own printing, the following message at the bottom of the picture: "Be careful around horses or other animals on the farm and at the fair."

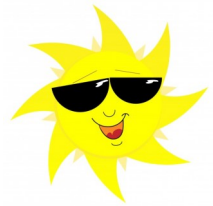
Class FS2 (Gr. 2) Tractor Safety:

Using a blank 8 1/2" X 11" sheet of paper, create a picture of a tractor or riding lawn mower using geometric shapes made from coloured paper. Below your picture print a tractor or lawn mower safety message.



Class FS3 (Gr. 3) Sun Safety:

Using a variety of art materials, design a t-shirt to wear in the sun, using the work page labeled Class FS3. Include a message on the shirt showing the importance of wearing a shirt when in the sun.



Class FS4 (Gr. 4) Fire Safety:

On a blank 8 1/2" X 11" sheet of paper, draw a fire escape plan for your home. Show the location of fire extinguishers and smoke alarms.

Class FS5 (Gr. 5) Farm/Home Safety:

Recreate the picture on the top of the workpage labeled Class FS5, correcting the dangers in the original picture.

Class FS6 (Gr. 6) Safety:

Using a blank piece of 11" x 14" paper, create a farm safety poster on a topic of your choice. Include a message warning of the danger of the activity and what should be done to do the activity safely. Or, poster could focus on the mental health struggles that come with farming and tips for coping and where to find help.

Class FS7 (students with special needs):

Using a blank 8 1/2" X 11" sheet of paper, make a picture of any safety topic. (a child can enter this category even if he or she is in a regular classroom).

Youth Poster Competition



Contact: Elizabeth Johnston, 519-291-0644; Tracey Fitton, 519-292-6112

Three Classes:

- A) Junior - Youth up to & including Grade 4
- B) Intermediate - Youth Grade 5 to Grade 8
- C) Senior - Youth Grade 9 to 12

Criteria for youth poster classes:

Must be an original hand made (hand drawn) design.

Must include the name and dates of the **Listowel Fair (July 18-21, 2024)**.

Must also include Fair Theme slogan **'Farming Fast Forward'** as it relates to technology in agriculture and food production in our area.

Poster Size: Minimum 22cm X 28cm to a Maximum 28cm X 44cm, **without border.**

Entries are not to be mounted on artcard or Bristol board. The winning entry in each category will be mounted by the Listowel Agricultural Society before competing at the District level.

On the back of each poster please include the following:

Student/Entrant name, grade level and full name of school



Judging Criteria

- 1) Overall appearance: 50 points
- 2) Hand Drawn : 35 points
- 3) Criteria (size, material, theme): 15 points

The winning poster from each class will compete at the District 8 competition.

Prizes for each class: 1st \$15; 2nd \$10; 3rd \$5

Judging of the posters will take place on July 17, 2024 from 12pm to 5pm.

Youth Poster Competition sponsored in memory of Ruth Robinson

2024 Listowel Fair

Baby Show



IN PERSON IN 2024!!

Saturday, July 20th, starting at 9:30am

(please see class times below)

Baby Show will take place in the tent beside the Agricultural Hall.

Show Information

- No cost to enter
- Child's age is as of July 20, 2024
- Each entry will receive a title (e.g. baby with the biggest smile, curliest hair, biggest eyes)
- Each entry will receive a certificate and a ribbon
- By participating you are consenting to have your child's name, title and possibly picture in the local newspaper
- For more information contact Brooklyn at 519-291-8467



1. Girl 0-6 months old (9:30am)
2. Boy 0-6 months old (10am)
3. Girl 7-12 months old (10:30am)
4. Boy 7-12 months old (11am)



The Categories!

5. Multiple Births, 0-6 months old (10:25am)
6. Multiple Births, 7-12 months old (10:55am)